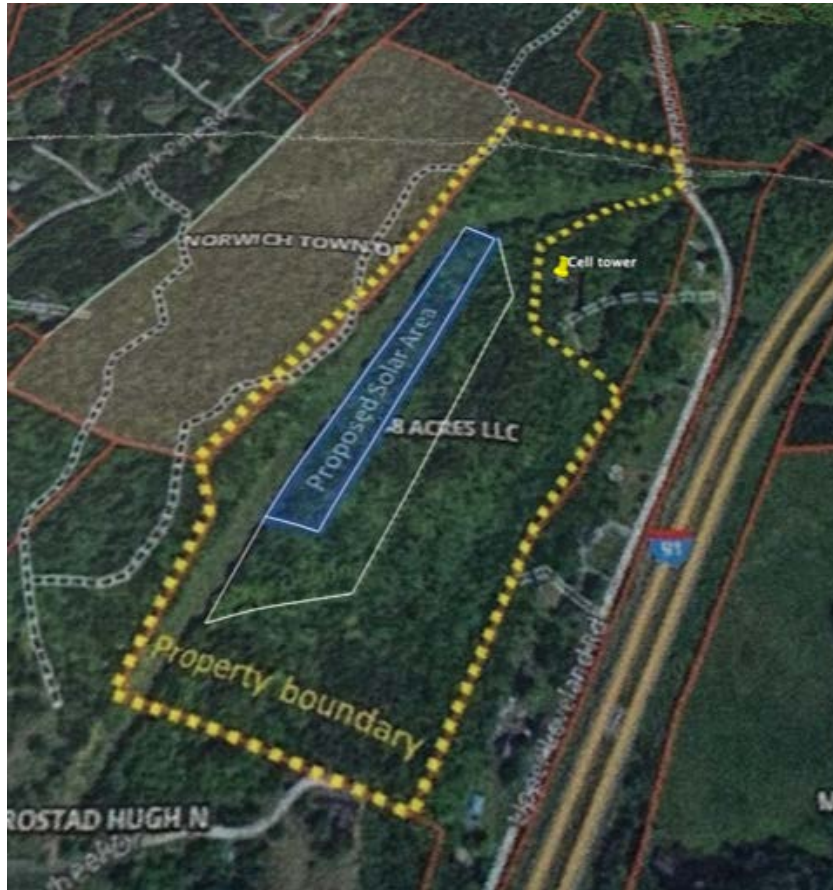
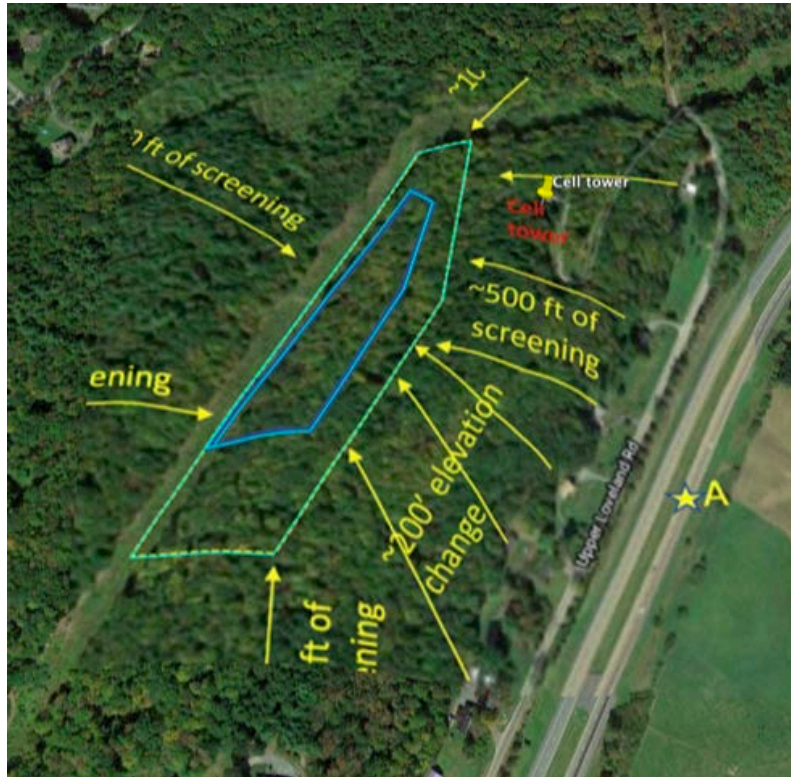


Ex. NN-Cross-8

The May 6, 2021 neighbor letter had the array outlined in blue and then a white dashed line that showed the cleared area. Both lines are depicted in white in Google Earth photo overlay (right).



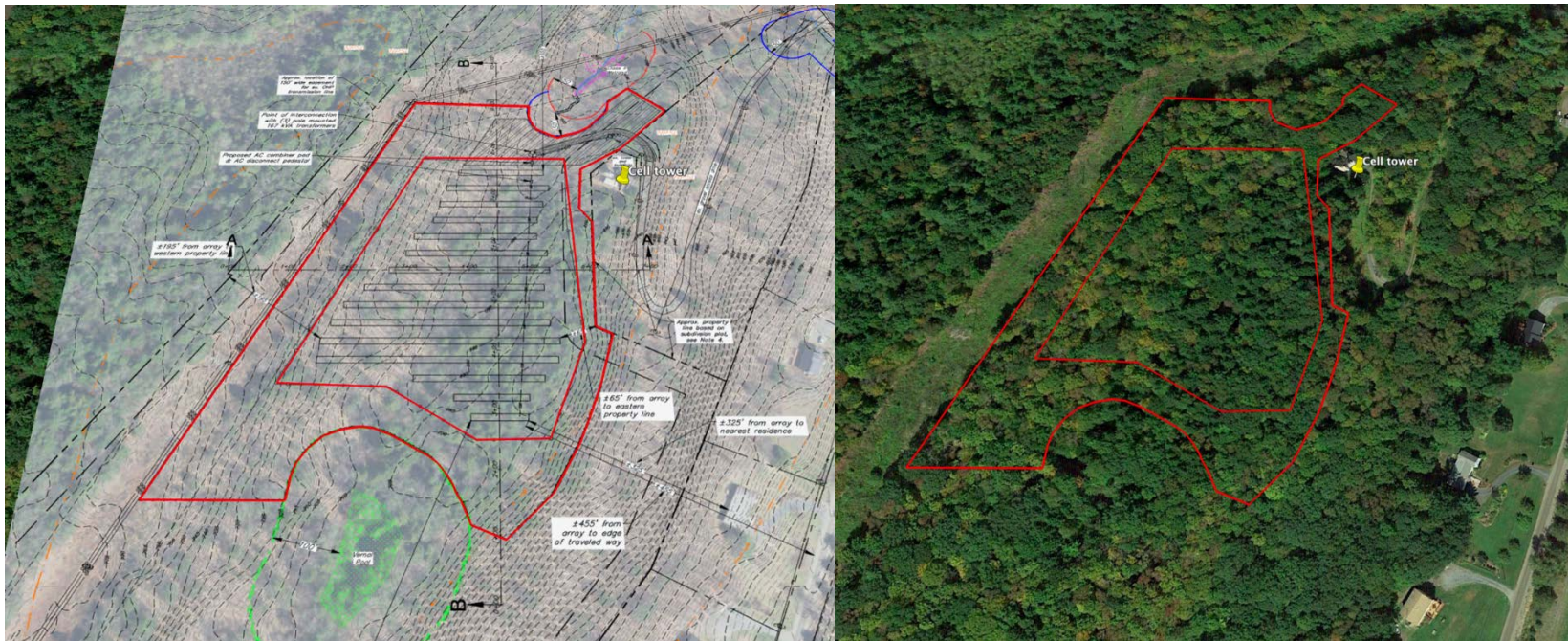
The Planning Commission Packet of July 13, 2021 contained this site plan with the array and the cleared area as shown outlined in turquoise



Advance Notice July 14, 2021 in
Purple
Outer line – Limits of
Disturbance Inner line, fence line.



Petition in Red Aug 31, 2021
Outer line – Limits of Disturbance
Inner line, fence line.



The outlines show the limits of clearing on each of the plans. The solar array is to be inside of each of these.

White = Neighbor Letter, Clearing, May 6, 2021

Turquoise = Planning Commission, Clearing, July 13, 2021

Purple = Advance Notice, Clearing, July 14, 2021 (Site Plan dated

Red = Petition Clearing

