

VERMONT PUBLIC
SERVICE BOARD

2015 NOV 3 AM 10 15

SUDBURY SOLAR LLC

November 2, 2015

Mrs. Susan Hudson, Clerk
Vermont Public Service Board
112 State Street, Drawer 20
Montpelier, VT 05620-2701

Re: Sudbury Solar LLC (Docket No. 8225) – Submission of revised final landscaping proposal for Board approval

Dear Mrs. Hudson,

On September 3, 2015, the Public Service Board issued a Certificate of Public Good (“CPG”) for the Sudbury Solar Project in Docket Number 8225. Condition number 38 of the CPG requests Sudbury Solar to submit a final landscaping proposal to the Board for review and approval. To that end, Sudbury Solar LLC issued a final landscaping plan to the Board and Parties for review and approval on October 21, 2015. On October 28, 2015, the Department of Public Service (“DPS”) sent a letter containing requested revisions to the landscaping plan.

This submission contains a ^{*}revised landscaping plan that incorporates all the requests contained in the DPS letter, as well as the requirements outlined in conditions 37 through 39 in the CPG. Sudbury Solar is sending the two attached documents which illustrate the solar project’s final site footprint and final landscaping proposal upon that footprint. Per condition 38, we are requesting Board response within one week of receipt of these documents.

Please feel free to contact me with any questions.

Warm Regards,

SUDBURY SOLAR LLC



Michael Melone

**STATE OF VERMONT
PUBLIC SERVICE BOARD**

Docket No. 8225

Petition of Sudbury Solar LLC, pursuant)
to 30 V.S.A. § 248, for a certificate of public)
good authorizing the installation and)
operation of a 2.0 MW solar electric generation)
facility located on Vermont Route 30 in)
Sudbury, Vermont)

CERTIFICATE OF SERVICE

I, Michael Melone, certify that on November 2, 2015, I forwarded copies of the Sudbury Solar Project's revised final site footprint and final landscaping proposal drawings in connection with Docket No. 8225 to the service list below by the delivery method noted below.

Vermont Public Service Board (Overnight UPS):

Mrs. Susan Hudson, Clerk
Vermont Public Service Board
112 State Street, Drawer 20
Montpelier, VT 05620-2701

Statutory Parties (Overnight UPS):

Vermont Department of Public Service
ATTN: Jeanne Elias
112 State Street, Drawer 20
Montpelier, VT 05620

Division of Historic Preservation
ATTN: Scott Dillon
1 National Life Drive
Davis Building, 6th Floor
Montpelier, VT 05620

Office of Planning and Legal Affairs
Agency of Natural Resources
ATTN: Jenn Duggan
1 National Life Drive
Davis Building, 2nd Floor
Montpelier, VT 05620

Dated this day of November 2, 2015

A handwritten signature in black ink, appearing to read 'M Melone', written in a cursive style.

Michael Melone

SUDBURY SOLAR LLC

VERMONT PUBLIC
SERVICE BOARD
2015 NOV 3 AM 10 15

Sudbury Solar Project

October 28, 2015 Comments from DPS

State of Vermont
Department of Public Service
112 State Street
Montpelier, VT 05620-2601
<http://publicservice.vermont.gov>

[phone] 802-828-2811
[fax] 802-828-2342
[tdd] 800-734-8390

2015 NOV 3 AM 10 15

October 28, 2015

Susan M. Hudson, Clerk
Vermont Public Service Board
112 State Street -
Montpelier, VT 05620-2701

Re: Docket 8225 - Sudbury Solar LLC

Dear Mrs. Hudson:

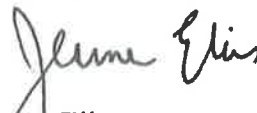
In response to the Sudbury Solar Post CPG compliance filing on 10/21/15 regarding landscaping for the project, following consultation with our aesthetics expert the Department of Public Service makes the following comments and recommendations

The landscaping plan seems fine with the exception of the *Physocarpus opulifolius 'nanus'*. After conducting additional research regarding the heights for this plant, it appears that this cultivar will range from 2' to 6' in height. This is too small for screening purposes. The Department would recommend instead, the species (*Physocarpus opulifolius*), which grows up to 10'. Also, *Physocarpus* is native to the northeast but not to Vermont. Therefore it is our recommendation that Sudbury Solar should use less of it, and more of the *Viburnum lentago*. We also recommend a slightly more diverse plant list, and add, for example, Common Witchhazel (*Hamamelis virginiana*).

Finally, though not in the Department's Memorandum of Understanding, or in the Final CPG issued for this project, our recent experience has demonstrated that confirmation of the installation of landscape mitigation both immediately after installation as well as three years after the initial plantings is crucial to the success of such mitigation. Therefore we request that Petitioner and the Board consider providing or requiring written confirmation from the Petitioner, by a qualified landscape architect, at both intervals that the mitigation has been completed and is thriving.

Thank you.

Sincerely,



Jeanne Elias
Special Counsel

cc: Service List



PSB Docket No. 8225 - SERVICE LIST

Jeanne Elias, Special Counsel
Vermont Department of Public Service
112 State Street
Montpelier, VT 05620-2601

Michael Melone
Sudbury Solar LLC.
C/O Allco Renewable Energy Limited
14 Wall Street – 20th Floor
New York, NY 10005

Donald J. Einhorn, Esq.
Randy J. Miller, II, Esq.
Vermont Agency of Natural Resources
1 National Life Drive, Davis 2
Montpelier, VT 05620-3901

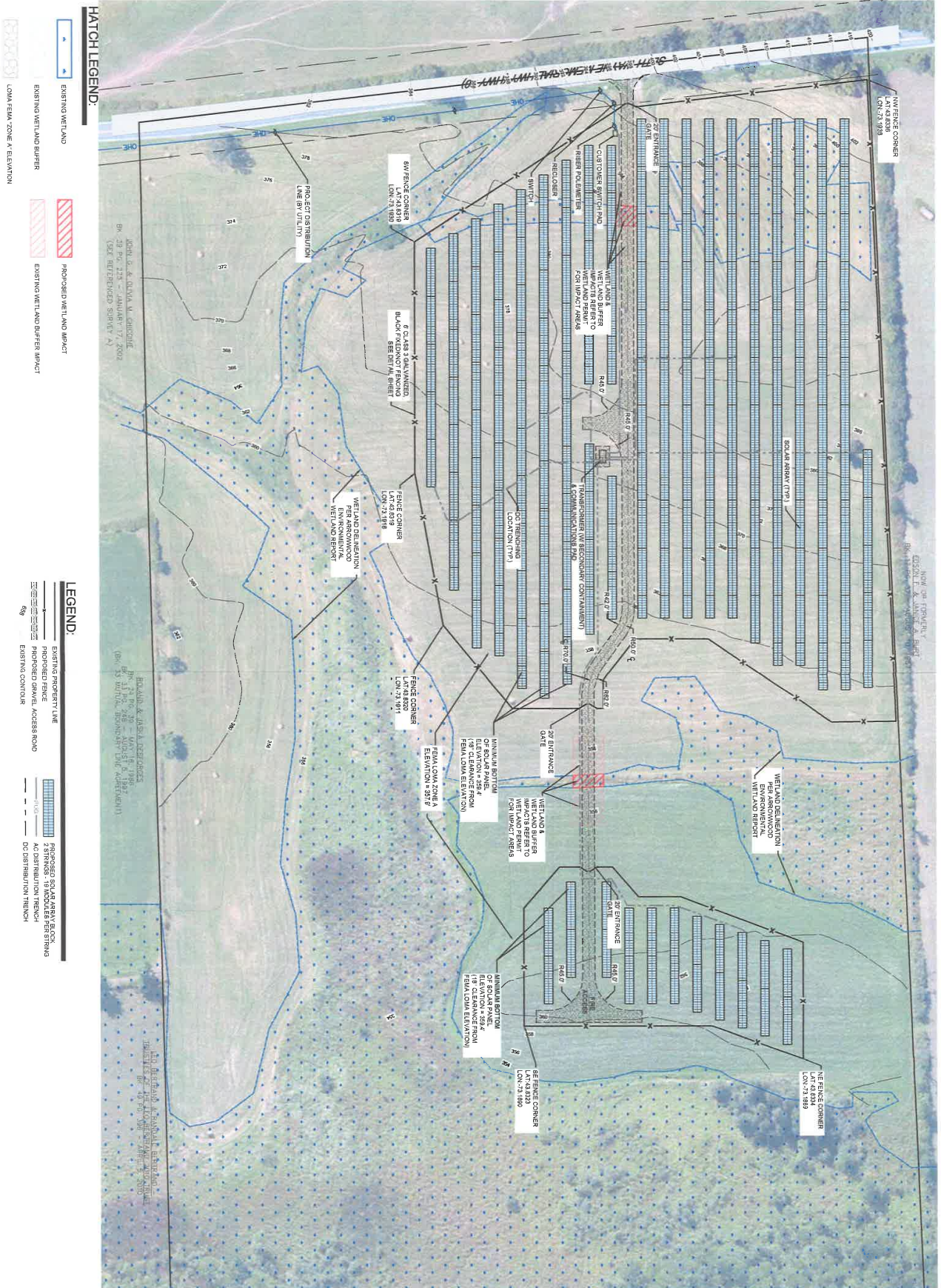
John Kessler, Esq.
Division of Historic Preservation
Agency of Commerce and Community
Development
National Life Bldg., 6th Floor
Montpelier, VT 05620

SUDBURY SOLAR LLC

VERMONT PUBLIC
SERVICE BOARD
2015 NOV 3 AM 10 15

Sudbury Solar Project

Site Footprint



ECOS ENERGY
 1105 SOUTH STREET
 SUITE 1000
 MINNEAPOLIS, MN 55402

REVISION LOG:
 DATE - NUMBER FOR REVISION
 DATE - REVISION DESCRIPTION
 DATE - REVISION DESCRIPTION
 DATE - REVISION DESCRIPTION

NOV 3 2013
 VERMONT PUBLIC SERVICE BOARD



SUDBURY SOLAR
 305 VERMONT ROUTE 30
 SUDBURY, VT 05733
 LAT:43.8325 / LON:-73.1912
 RUTLAND COUNTY

1 of 1

FINAL SITE PLAN

SUDBURY SOLAR LLC

Sudbury Solar Project

Revised Landscaping Proposal

VERMONT PUBLIC
SERVICE BOARD
2015 NOV 3 AM 10 16

VERMONT PUBLIC SERVICE BOARD
 1015 NOV 3 AM 10 16

SE GROUP
 121 Church Street
 Burlington, VT 05401
 Tel: 802.888.2400
 Fax: 802.888.2400
 www.segroup.com

Sudbury Solar LLC
 SUDBURY PROJECT

Graphic Scale: 0' 15' 30' 45'
 North
 Scale: 1" = 30'
 Date: October 30, 2015
 Drawn By: TH
 Checked By:
 Number: _____
 Description: _____
 Date: _____

Planting Plan
 LA400
 Project Number:
 File:

KEY	BOTANICAL NAME	COMMON NAME	QTY.	SIZE	REMARKS
CR	Cornus racemosa	Gray Dogwood	91	3-4' Ht.	88.8' Plant 60" oc
HV	Hemibella virginiana	Common Witchhazel	19	3-4' Ht.	88.8' Plant
PD	Physocarpus opulifolius	Common Mibak	17	3-4' Ht.	88.8'
AD	Artemisia dentata	Arrowweed Viburnum	114	3-4' Ht.	88.8' Plant
VL	Viburnum lentago	Nannyberry Viburnum	58	3-4' Ht.	88.8' Plant
OC					

- NOTES:
 1. CONTRACTOR IS RESPONSIBLE TO VERIFY ALL PLANT QUANTITIES FOUND IN THE PLANTING PLAN. IF ANY DISCREPANCIES ARE FOUND, LANDSCAPE ARCHITECT SHOULD BE NOTIFIED IMMEDIATELY.
 2. CONTRACTOR IS RESPONSIBLE TO VERIFY ALL PLANT SPECIES AND SIZES PROVIDED BY THE LANDSCAPE ARCHITECT PRIOR TO INSTALLATION.
 3. CONTRACTOR IS RESPONSIBLE TO SEED ALL DISTURBED AREAS ACCORDING TO THE SPECIFICATIONS AND LAWN DETAIL.
 4. REFER TO DRAWING PLANTING DETAILS FOR PLANT MATERIAL INSTALLATION.
 5. CONTINUOUS PLANTING PITS FILLED WITH PLANTING MIX IS REQUIRED IN ALL TREE, SHRUB AND PERENNIALS BED OR AS NOTED.
 6. LANDSCAPE ARCHITECT IN WRITING PRIOR TO ORDERING.
 7. REFER TO DETAIL A14.400 FOR SHRUB PLANTING SPECIFICATIONS

