

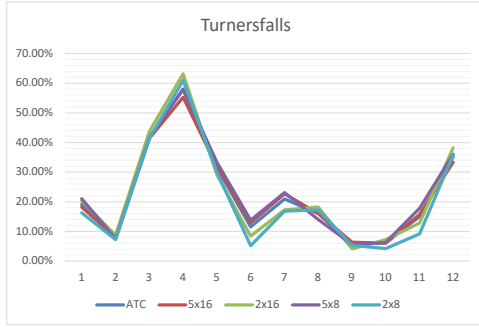
Turnersfalls	
MW	6.4
Asset	14808

ATC	
Year	(All)
Row Labels	Average of Capacity Factor
2021	24.36%
2022	16.68%
2023	24.85%
2024	21.92%

ATC	
Year	(All)
Row Labels	Average of Capacity Factor
1	19.10%
2	7.93%
3	41.94%
4	57.86%
5	31.37%
6	11.51%
7	21.00%
8	16.04%
9	5.62%
10	6.16%
11	14.98%
12	35.17%

5x16	
Year	(All)
Row Labels	Average of Capacity Factor
1	18.30%
2	7.91%
3	41.49%
4	55.26%
5	31.77%
6	12.96%
7	22.68%
8	16.09%
9	6.38%
10	6.03%
11	15.77%
12	33.31%

2x16	
Year	(All)
Row Labels	Average of Capacity Factor
1	20.30%
2	8.76%
3	43.81%
4	63.07%
5	29.01%
6	8.43%
7	17.28%
8	18.23%
9	4.09%
10	7.25%
11	12.80%
12	38.26%



5x8	
Year	(All)
Row Labels	Average of Capacity Factor
1	21.00%
2	7.50%
3	41.69%
4	58.07%
5	33.30%
6	13.79%
7	23.09%
8	14.01%
9	5.53%
10	6.25%
11	17.83%
12	36.01%

2x8	
Year	(All)
Row Labels	Average of Capacity Factor
1	16.26%
2	7.27%
3	41.49%
4	60.98%
5	29.90%
6	5.14%
7	16.84%
8	17.27%
9	5.29%
10	4.20%
11	9.14%
12	35.83%

Hour Count	Year	Month	Month / Year	Total Monthly MWh	Capacity Factor	ATC
744	2021	1	1/1/21	55.93	1.17%	
672	2021	2	2/1/21	0.029	0.00%	
743	2021	3	3/1/21	1403.697	29.52%	
720	2021	4	4/1/21	2811.886	61.02%	
744	2021	5	5/1/21	1542.495	32.39%	
720	2021	6	6/1/21	317.755	6.90%	
744	2021	7	7/1/21	2078.559	43.65%	
744	2021	8	8/1/21	1422.848	29.88%	
720	2021	9	9/1/21	484.384	10.51%	
744	2021	10	10/1/21	366.857	7.70%	
721	2021	11	11/1/21	1962.007	42.52%	
744	2021	12	12/1/21	1288.102	27.05%	
744	2022	1	1/1/22	119.011	2.50%	
672	2022	2	2/1/22	644.656	14.99%	
743	2022	3	3/1/22	2138.148	44.96%	
720	2022	4	4/1/22	2840.432	61.64%	
744	2022	5	5/1/22	751.486	15.78%	
720	2022	6	6/1/22	3.163	0.07%	
744	2022	7	7/1/22	47.009	0.99%	
744	2022	8	8/1/22	5.137	0.11%	
720	2022	9	9/1/22	387.025	8.40%	
744	2022	10	10/1/22	142.688	3.00%	
721	2022	11	11/1/22	311.181	6.74%	
744	2022	12	12/1/22	1952.212	41.00%	
744	2023	1	1/1/23	2023.219	42.49%	
672	2023	2	2/1/23	574.532	13.36%	
743	2023	3	3/1/23	617.901	12.99%	
720	2023	4	4/1/23	1973.771	42.83%	
744	2023	5	5/1/23	872.977	18.33%	
720	2023	6	6/1/23	462.675	10.04%	
744	2023	7	7/1/23	1956.332	41.09%	
744	2023	8	8/1/23	1220.582	25.63%	
720	2023	9	9/1/23	422.546	9.17%	
744	2023	10	10/1/23	664.52	13.96%	
721	2023	11	11/1/23	492.593	10.68%	
744	2023	12	12/1/23	2744.338	57.63%	
744	2024	1	1/1/24	1997.113	41.94%	
696	2024	2	2/1/24	500.844	11.24%	
743	2024	3	3/1/24	3216.509	67.64%	
720	2024	4	4/1/24	2538.153	55.08%	
744	2024	5	5/1/24	1199.206	25.18%	
720	2024	6	6/1/24	144.602	3.14%	
744	2024	7	7/1/24	914.769	19.21%	
744	2024	8	8/1/24	1169.624	24.56%	
720	2024	9	9/1/24	0	0.00%	
744	2024	10	10/1/24	0	0.00%	
721	2024	11	11/1/24	0	0.00%	
744	2024	12	12/1/24	714.576	15.01%	
744	2025	1	1/1/25	351.537	7.38%	
672	2025	2	2/1/25	1.794	0.04%	
743	2025	3	3/1/25	2594.244	54.56%	
720	2025	4	4/1/25	3165.65	68.70%	
744	2025	5	5/1/25	3101.251	65.13%	
720	2025	6	6/1/25	1723.603	37.40%	
744	2025	7	7/1/25	2.405	0.05%	
744	2025	8	8/1/25	0	0.00%	
720	2025	9	9/1/25	0	0.00%	