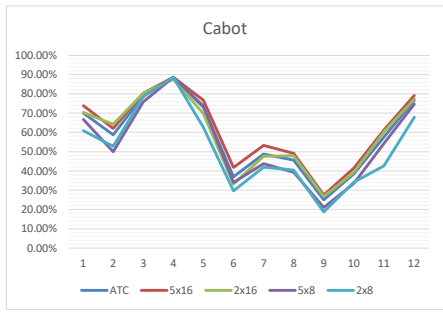


Cabot  
 MW 61.92  
 Asset 14801

ATC		ATC (All)	
Year	Average of Capacity Factor	Year	Average of Capacity Factor
2021	60.27%	1	70.12%
2022	52.12%	2	58.70%
2023	72.65%	3	79.08%
2024	55.88%	4	88.52%
		5	73.04%
		6	37.04%
		7	48.81%
		8	45.65%
		9	25.09%
		10	38.44%
		11	57.55%
		12	76.61%

5x16		2x16	
Year	Average of Capacity Factor	Year	Average of Capacity Factor
1	73.79%	1	70.33%
2	62.02%	2	64.23%
3	80.27%	3	80.27%
4	88.67%	4	87.65%
5	76.60%	5	69.75%
6	41.77%	6	33.19%
7	53.27%	7	47.68%
8	49.06%	8	47.99%
9	27.54%	9	26.85%
10	41.55%	10	39.38%
11	61.24%	11	60.22%
12	79.23%	12	77.40%

19%  
 8%  
 42%  
 58%  
 31%  
 12%  
 21%  
 16%  
 6%  
 6%  
 15%  
 35%



5x8	
Year	Average of Capacity Factor
1	66.76%
2	49.94%
3	75.90%
4	88.70%
5	73.63%
6	34.03%
7	43.84%
8	39.26%
9	21.19%
10	33.45%
11	54.18%
12	74.71%

2x8	
Year	Average of Capacity Factor
1	60.82%
2	52.84%
3	78.57%
4	88.75%
5	62.49%
6	29.66%
7	41.98%
8	40.52%
9	18.88%
10	34.16%
11	42.68%
12	67.94%

Hour Count	Year	Month	Month / Year	Total Monthly MWH	Capacity Factor	ATC
744	2021	1	1/1/21	31710.347	68.83%	
672	2021	2	2/1/21	17053.414	40.98%	
743	2021	3	3/1/21	31228.258	67.88%	
720	2021	4	4/1/21	39144.954	87.80%	
744	2021	5	5/1/21	29203.244	63.39%	
720	2021	6	6/1/21	10058.815	22.56%	
744	2021	7	7/1/21	31696.164	68.80%	
744	2021	8	8/1/21	23127.157	50.20%	
720	2021	9	9/1/21	17600.823	39.48%	
744	2021	10	10/1/21	23836.813	51.74%	
721	2021	11	11/1/21	36250.823	81.20%	
744	2021	12	12/1/21	37004.92	80.33%	
744	2022	1	1/1/22	25682.59	55.75%	
672	2022	2	2/1/22	26620.533	63.98%	
743	2022	3	3/1/22	39304.93	85.43%	
720	2022	4	4/1/22	40987.669	91.94%	
744	2022	5	5/1/22	34526.939	74.95%	
720	2022	6	6/1/22	13988.47	31.38%	
744	2022	7	7/1/22	7624.984	16.55%	
744	2022	8	8/1/22	6019.863	13.07%	
720	2022	9	9/1/22	7273.476	16.31%	
744	2022	10	10/1/22	18512.222	40.18%	
721	2022	11	11/1/22	24349.629	54.54%	
744	2022	12	12/1/22	37458.326	81.31%	
744	2023	1	1/1/23	38522.811	83.62%	
672	2023	2	2/1/23	31597.565	75.94%	
743	2023	3	3/1/23	35654.498	77.50%	
720	2023	4	4/1/23	38768.369	86.96%	
744	2023	5	5/1/23	31228.56	67.79%	
720	2023	6	6/1/23	21983.76	49.31%	
744	2023	7	7/1/23	38027.921	82.55%	
744	2023	8	8/1/23	39207.76	85.11%	
720	2023	9	9/1/23	21258.275	47.68%	
744	2023	10	10/1/23	28481.796	61.82%	
721	2023	11	11/1/23	32024.352	71.73%	
744	2023	12	12/1/23	37667.781	81.76%	
744	2024	1	1/1/24	41121.507	89.26%	
696	2024	2	2/1/24	33238.017	77.12%	
743	2024	3	3/1/24	39024.752	84.82%	
720	2024	4	4/1/24	37989.557	85.21%	
744	2024	5	5/1/24	33241.57	72.16%	
720	2024	6	6/1/24	14542.254	32.62%	
744	2024	7	7/1/24	27208.261	59.06%	
744	2024	8	8/1/24	31420.243	68.20%	
720	2024	9	9/1/24	7273.431	16.31%	
744	2024	10	10/1/24	0	0.00%	
721	2024	11	11/1/24	10144.266	22.72%	
744	2024	12	12/1/24	29046.722	63.05%	
744	2025	1	1/1/25	24469.132	53.11%	
672	2025	2	2/1/25	14752.539	35.45%	
743	2025	3	3/1/25	36690.536	79.75%	
720	2025	4	4/1/25	40423.454	90.67%	
744	2025	5	5/1/25	40038.054	86.91%	
720	2025	6	6/1/25	22004.179	49.36%	
744	2025	7	7/1/25	7881.336	17.11%	
744	2025	8	8/1/25	5374.986	11.67%	
720	2025	9	9/1/25	2525.595	5.67%	