



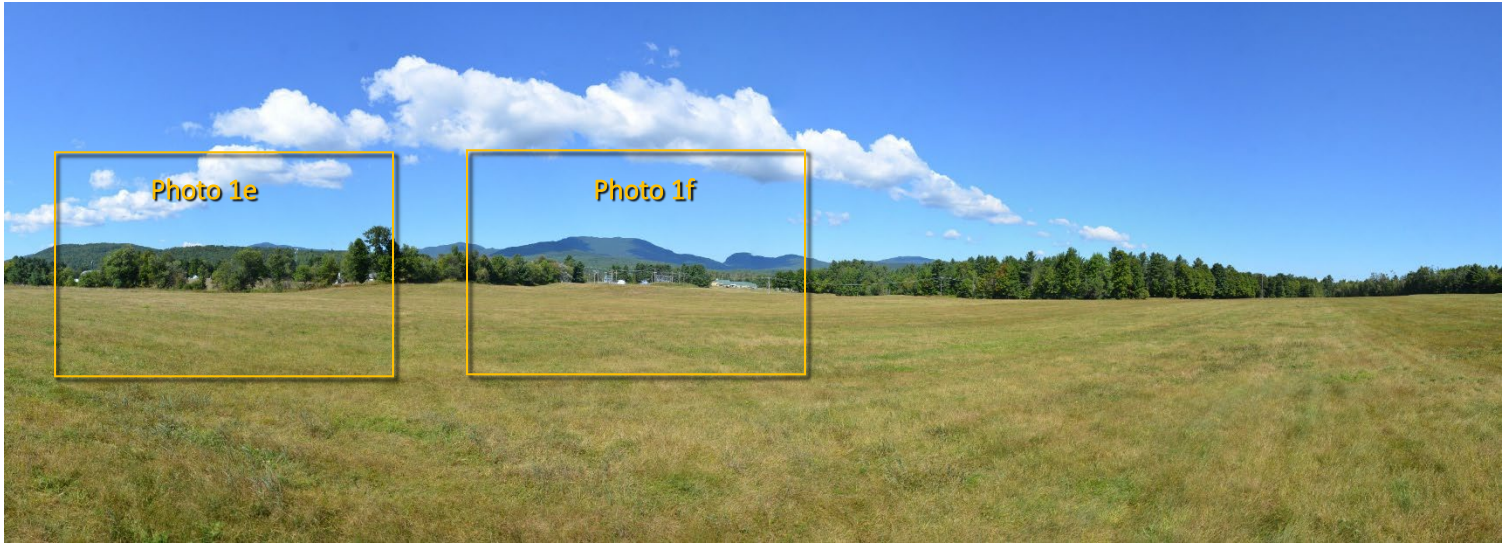
Viewpoint 1a: Approximately 180° panoramic view from within the Project site near the center of the southern array area, panning from northeast (left) to southwest (right). The orange rectangles represent the images below, which are captured with a 52.5mm focal length equivalent.



Viewpoint 1b: View from the Project site looking east at existing field and residential building beyond intervening vegetation to remain. (52.5mm equivalent)



Viewpoint 1c: View from the Project site looking south at existing field and residential building. (52.5mm equivalent)



Viewpoint 1d: Approximately 180° panoramic view from within the Project site near the center of the southern array area, panning from southwest (left) to northeast (right). This is a continuation of the previous panoramic view for full 360°. The orange rectangles represent the images below, which are captured with a 52.5mm focal length equivalent.



Viewpoint 1e: View from the Project site looking southwest at existing field, intervening vegetation, cemetery, buildings and communications tower. (52.5mm equivalent)



Viewpoint 1f View from the Project site looking northwest at existing field, VEC and GMP substations, elementary school building, and mountains beyond. (52.5mm equivalent)



Viewpoint 2a: Approximately 180° panoramic view from within the Project site near the east edge of the southern array area, panning from northeast (left) to southwest (right). The orange rectangles represent the images below, which are captured with a 57mm focal length equivalent.



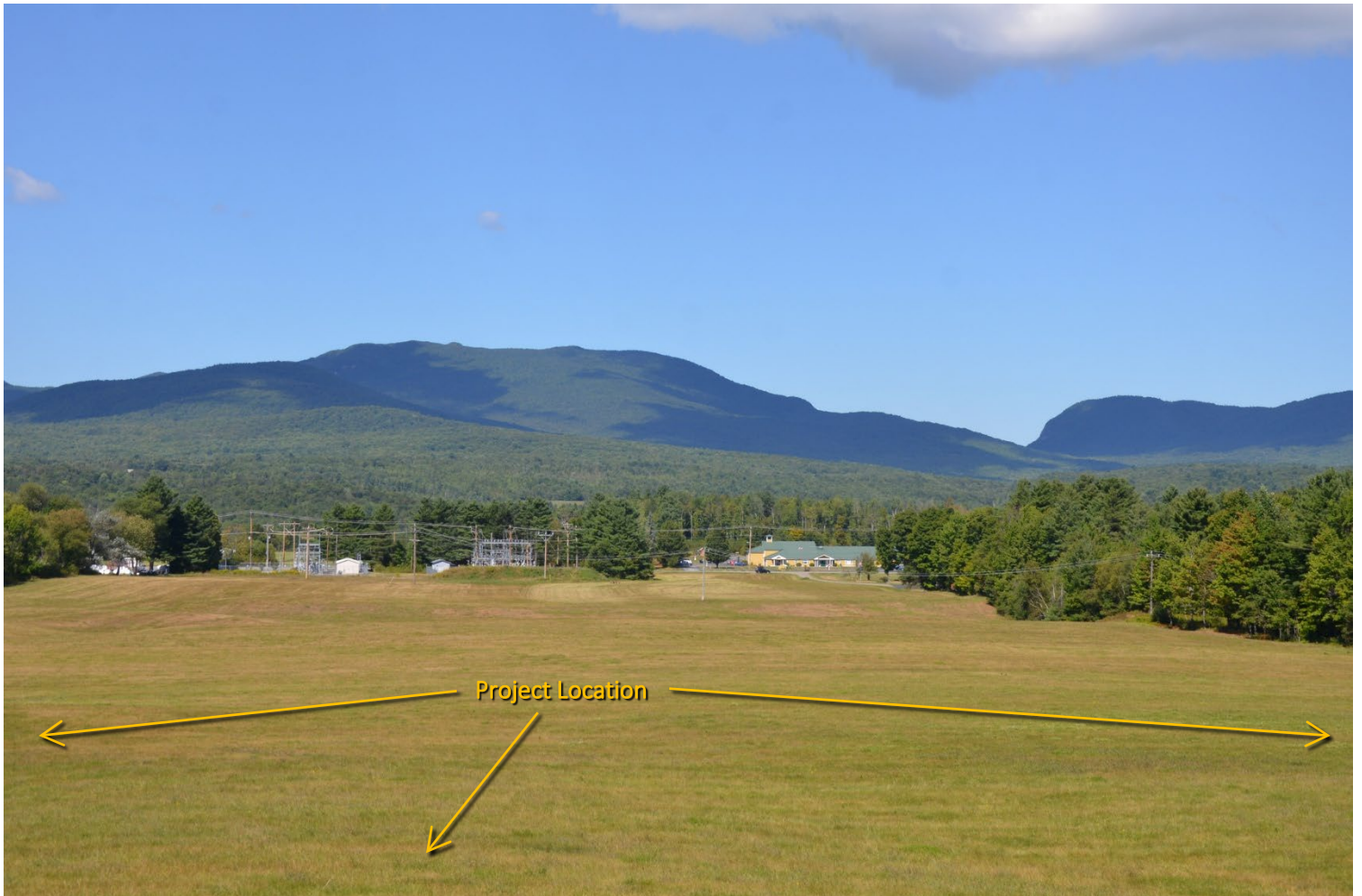
Viewpoint 2b: View from the Project site looking east at existing residential building. (57mm equivalent)



Viewpoint 2c: View from the Project site looking southwest at existing field, residential building and mountains beyond. (57mm equivalent)



Viewpoint 2d: Approximately 180° panoramic view from within the Project site near the east edge of the southern array area, panning from southwest (left) to northeast (right). This is a continuation of the previous panoramic view for full 360°. The orange rectangle represents the image below, which is captured with a 57mm focal length equivalent.



Viewpoint 2e: View from the Project site looking northwest at existing field, GMP and VEC substations (center left), elementary school building (center right), and mountains beyond. (57mm equivalent)



Viewpoint 3a: Approximately 180° panoramic view from within the Project site near the western extent of the southern array area, panning from northeast (left) to southwest (right). The orange rectangle represents the image below, which is captured with a 52.5mm focal length equivalent.



Viewpoint 3b: View from the Project site looking southeast at existing field and residential building, with mountains and wind turbines in the background. (52.5mm equivalent)



Viewpoint 3c: Approximately 180° panoramic view from within the Project site near the western extent of the southern array area, panning from southwest (left) to northeast (right). This is a continuation of the previous panoramic view for full 360°. The orange rectangle represents the image below, which is captured with a 52.5mm focal length equivalent.



Viewpoint 3d: View from the Project site looking northwest at existing field and residential building (far right), with Route 100, elementary school (left) and town office (center right) beyond. (52.5mm equivalent)



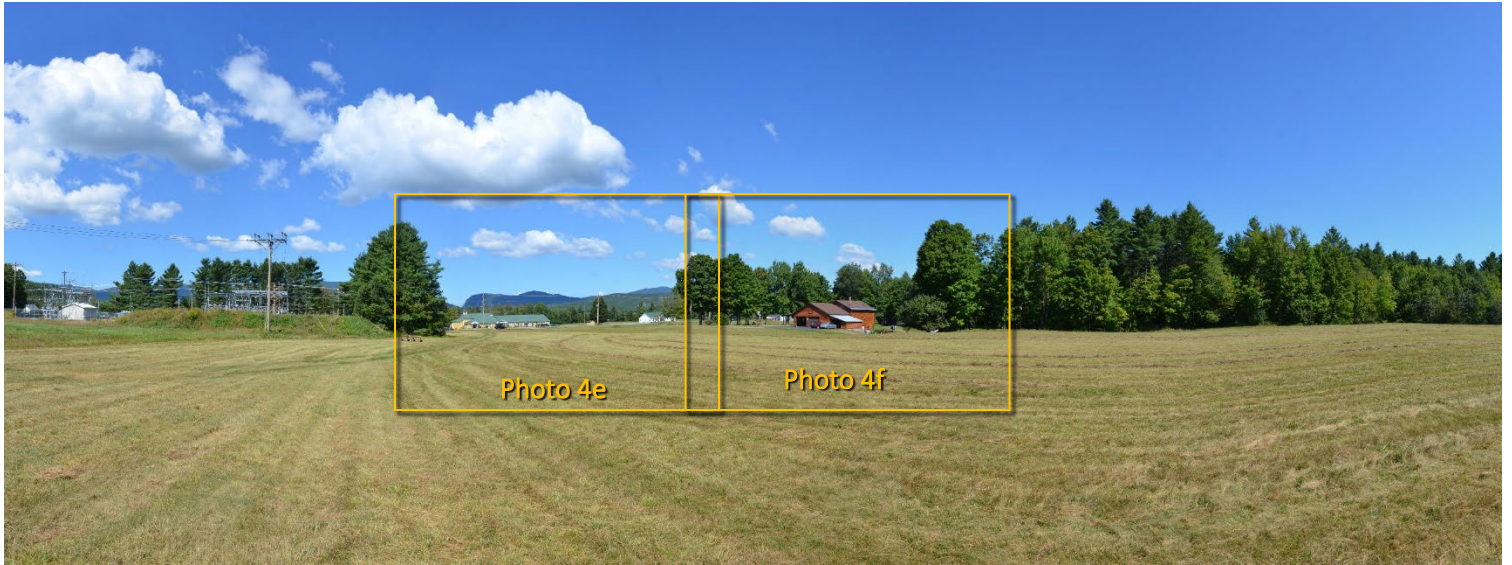
Viewpoint 4a: Approximately 180° panoramic view from within the Project Site near the western extent of the southern array area, panning from northeast (left) to southwest (right). The orange rectangle represents the image below, which is captured with a 52.5mm focal length equivalent.



Viewpoint 4b: View from within the Project site looking southeast at the existing field and residential buildings. (52.5mm equivalent)



Viewpoint 4c: View from within the Project site looking southwest at the existing field and nearby residential building beyond intervening vegetation (right). (52.5mm equivalent)



Viewpoint 4d: Approximately 180° panoramic view from within the Project Site near the western extent of the southern array area, panning from southwest (left) to northeast (right). This is a continuation of the previous panoramic view for full 360°. The orange rectangles represent the images below, which are captured with a 52.5mm focal length equivalent.



Viewpoint 4e: View from the Project site looking northwest at the existing field, Route 100, elementary school (left) and town office (right). (52.5mm equivalent)



Viewpoint 4f: View from the Project site looking northwest at the existing field and residential building. (52.5mm equivalent)



Viewpoint 5: Approximately 180° panoramic view from Vermont Route 100 northwest of the Project Site, panning from northeast (left) to southwest (right). The orange rectangle represents the image below, which is captured with a 52.5mm focal length equivalent.



Viewpoint 5: View from Vermont Route 100 looking southeast towards the Project site. (52.5mm equivalent)



Viewpoint 6: Approximately 180° panoramic view from Vermont Route 100 northwest of the Project Site, panning from northeast (left) to southwest (right). The orange rectangle represents the image below, which is captured with a 52.5mm focal length equivalent.



Viewpoint 6: View from Vermont Route 100 looking southeast towards the Project site. (52.5mm equivalent)



Viewpoint 7: Approximately 180° panoramic view from Vermont Route 100 northwest of the Project Site, panning from north (left) to south (right). The orange rectangle represents the image below, which is captured with a 52.5mm focal length equivalent.



Viewpoint 7: View from Vermont Route 100 looking slightly southeast towards the Project site. (52.5mm equivalent)



Viewpoint 8: Approximately 180° panoramic view from Vermont Route 100 west of the Project Site, panning from north (left) to south (right). The orange rectangle represents the image below, which is captured with a 52.5mm focal length equivalent.



Viewpoint 8: View from Vermont Route 100 looking east towards the Project site located beyond existing GMP substation. (52.5mm equivalent)



Viewpoint 9: Approximately 180° panoramic view from Vermont Route 100 west of the Project Site, panning from north (left) to south (right). The orange rectangle represents the image below, which is captured with a 52.5mm focal length equivalent.



Viewpoint 9: View from Vermont Route 100 looking east towards the Project site. (52.5mm equivalent)



Viewpoint 10: Approximately 180° panoramic view from Mountain View Cemetery, panning from northwest (left) to southeast (right). The orange rectangle represents the image below, which is captured with a 52.5mm focal length equivalent.



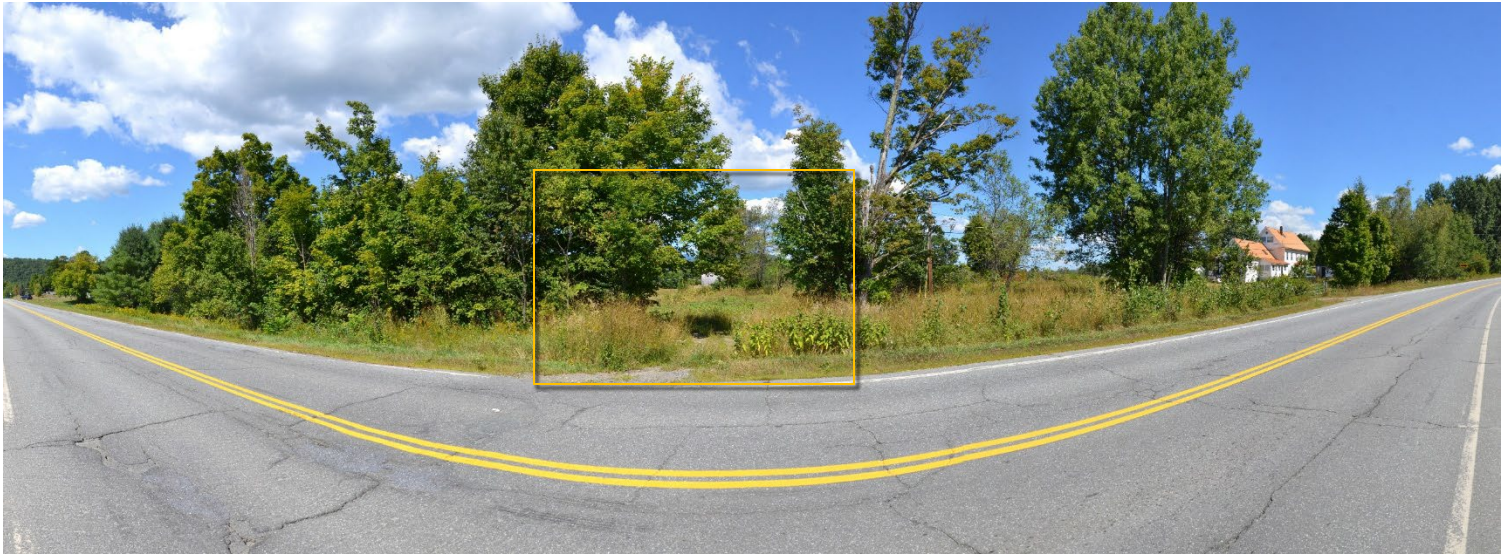
Viewpoint 10: View from Mountain View Cemetery looking northeast towards the Project site. (52.5mm equivalent)



Viewpoint 11: Approximately 180° panoramic view from Vermont Route 58E south of the Project site, panning from southwest (left) to northeast (right). The orange rectangle represents the image below, which is captured with a 52.5mm focal length equivalent.



Viewpoint 11: View from Vermont Route 58E looking north towards the Project site. (52.5mm equivalent)



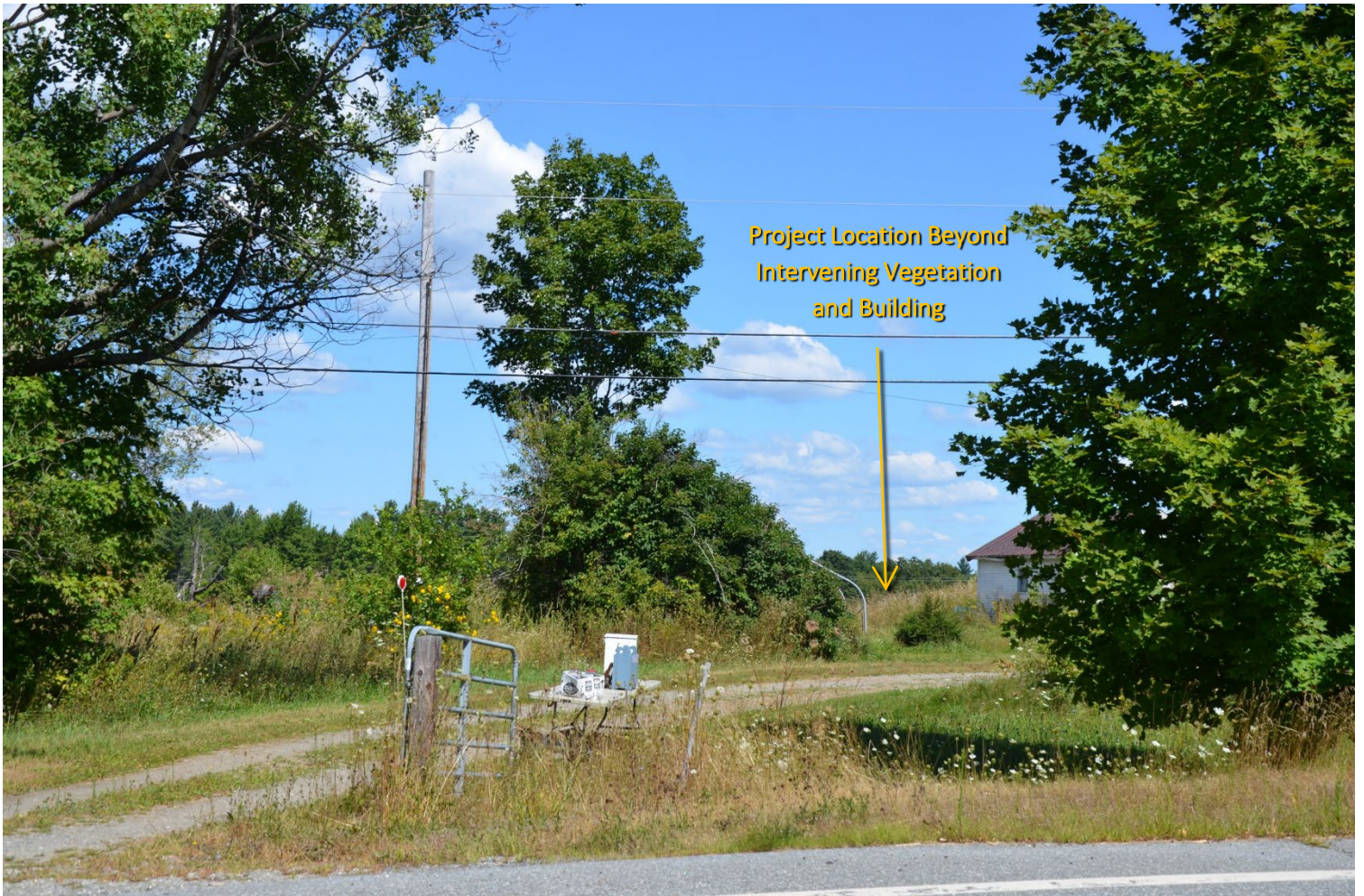
Viewpoint 12: Approximately 180° panoramic view from Vermont Route 58E south of the Project site, panning from southwest (left) to northeast (right). The orange rectangle represents the image below, which is captured with a 52.5mm focal length equivalent.



Viewpoint 12: View from Vermont Route 58E looking north towards the Project site. (52.5mm equivalent)



Viewpoint 13: Approximately 180° panoramic view from Vermont Route 58E south of the Project site, panning from southwest (left) to northeast (right). The orange rectangle represents the image below, which is captured with a 52.5mm focal length equivalent.



Viewpoint 13: View from Vermont Route 58E looking north towards the Project site. (52.5mm equivalent)



Viewpoint 14: Approximately 180° panoramic view from Vermont Route 58E south of the Project site, panning from southwest (left) to northeast (right). The orange rectangle represents the image below, which is captured with a 52.5mm focal length equivalent.



Viewpoint 14: View from Vermont Route 58E looking north towards the Project site. (52.5mm equivalent)