

# Northland Solar Project

Appendix A

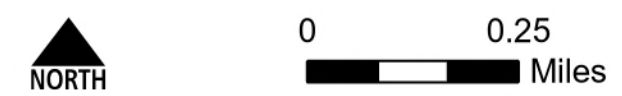
## MAP 1: AERIAL CONTEXT MAP

May 2026

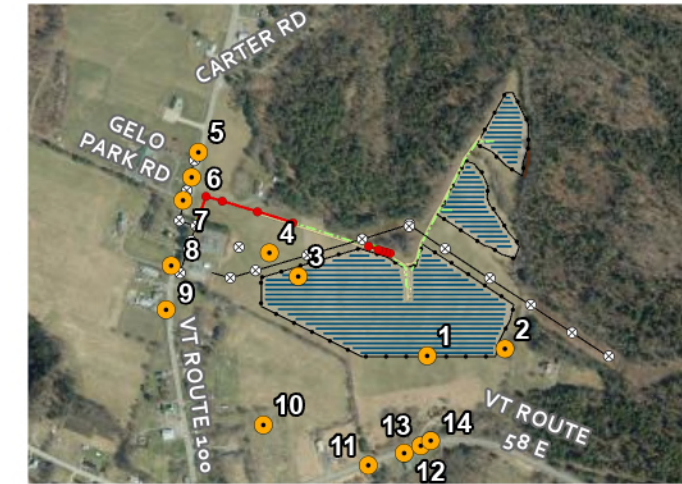
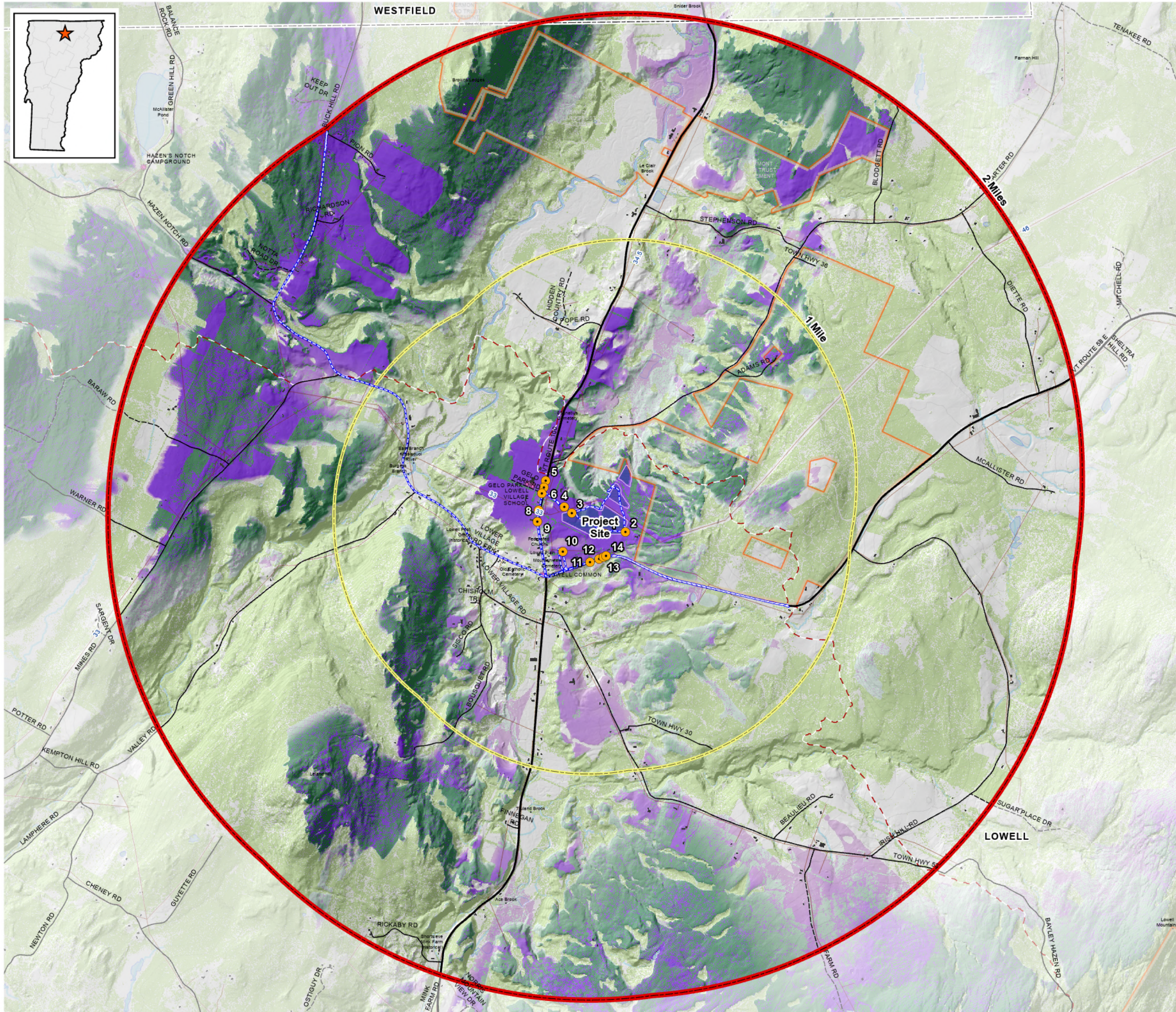
### LEGEND

- Viewpoint Location
- \* Landmarks
- \* Recreation Sites
- Utility Lines
- Inventory Route
- - - Vermont Trails
- Proposed Overhead Power
- Proposed Underground Power
- 1-Mile Radius
- Town Boundary
- Vermont Protected Lands
- Hydrology
- Proposed Solar Array Layout

NS-JO-2 Appendix A  
(Rev.)



Service Layer Credits: EGC\_services\IMG\_VCGI\_CLR\_SP\_CACHE: VCGI



SITE MAP

# Northland Solar Project

Appendix A

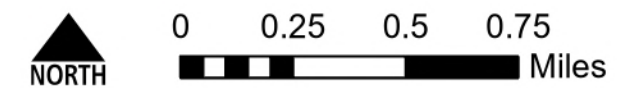
## MAP 2: TERRAIN VIEWSHED MAP

[ 2-Mile Study Area ]

May 2026

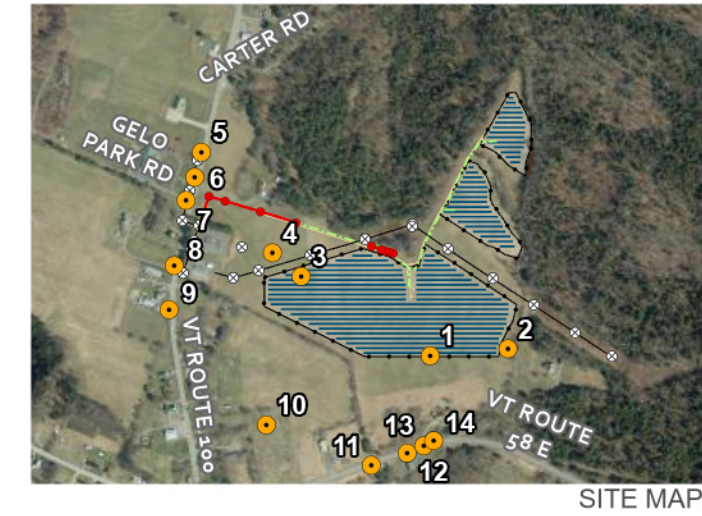
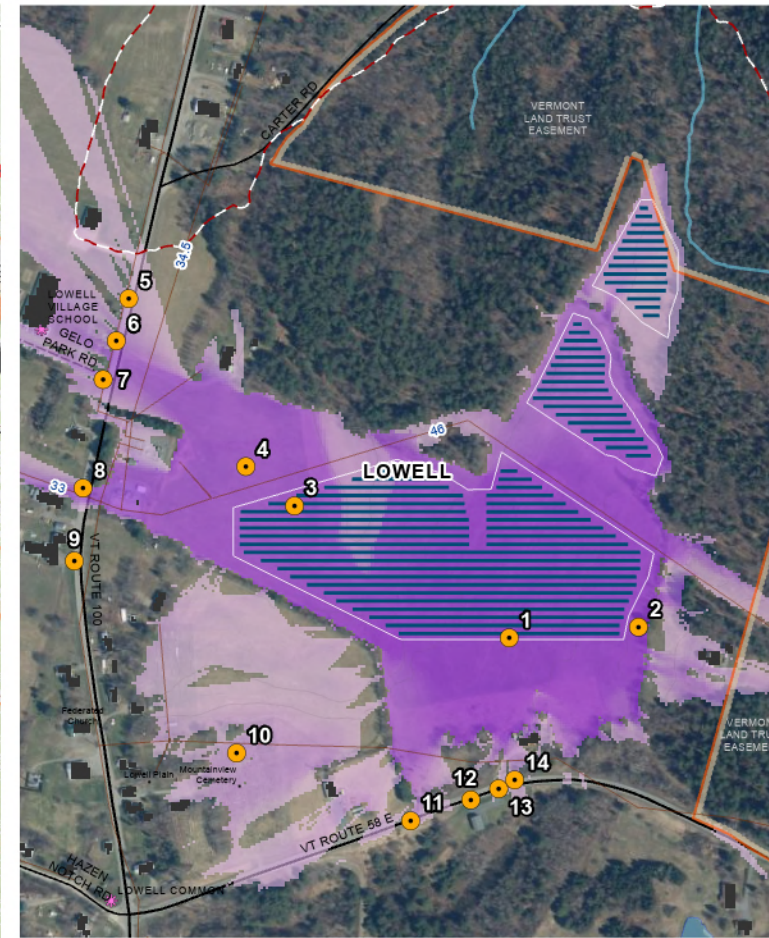
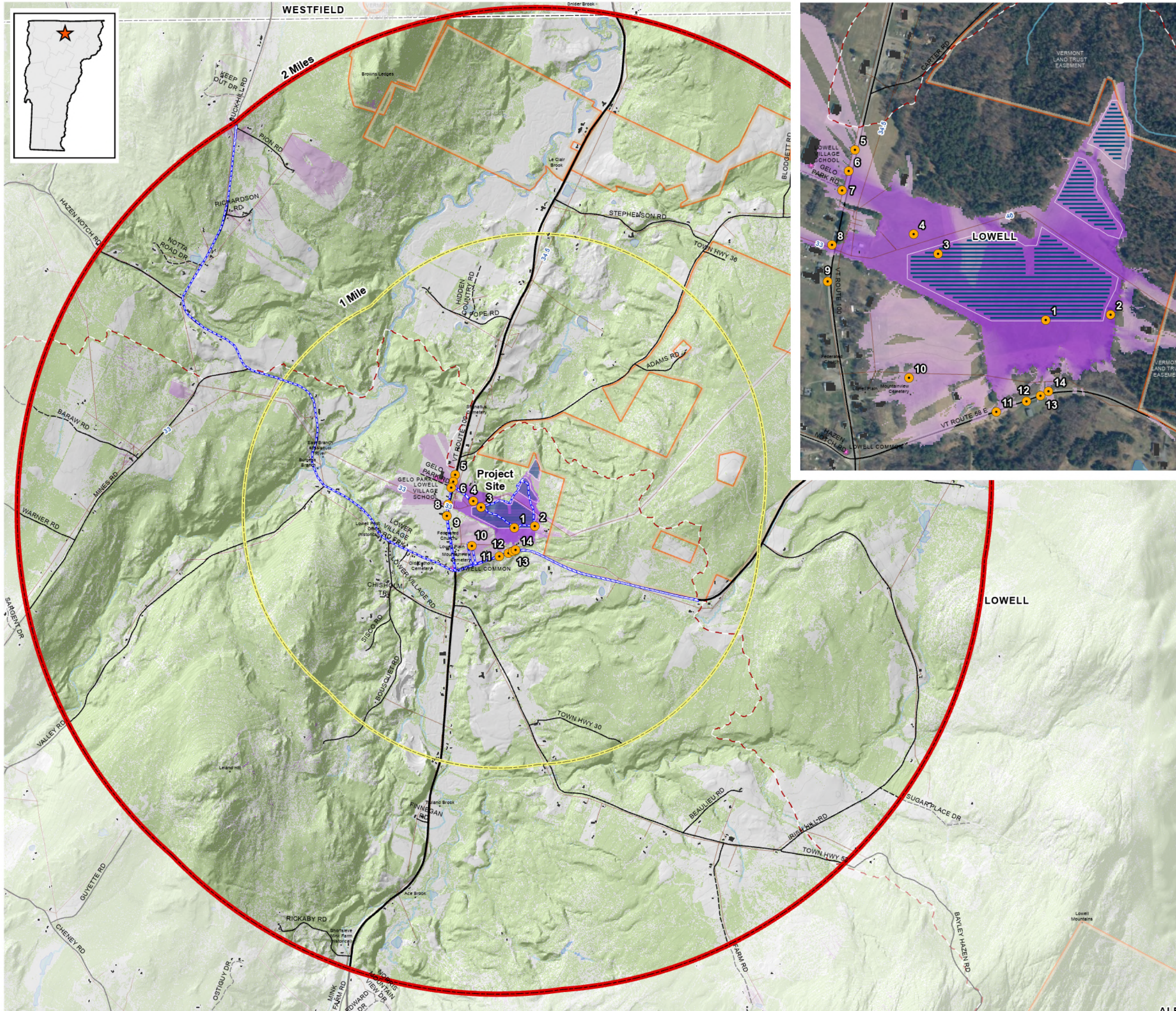
### LEGEND

- Viewpoint Location
  - Landmarks
  - \* Recreation Sites
  - Inventory Route
  - 20' Contours
  - - - Vermont Trails
  - 2-Mile Study Area
  - Town Boundary
  - Hydrology
  - Vermont Protected Lands
  - Proposed Solar Array Layout
- Potential Visibility within Non-Forested Areas
- Low     High
- Potential Visibility within Forested Areas
- Low     High



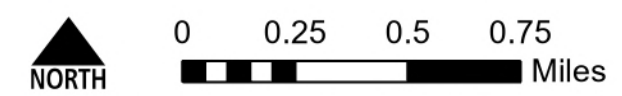
GIS viewshed mapping is a preliminary means of visual analysis. While beneficial for preliminary orientation and investigation, because of data assumptions and omissions, viewshed maps are not a definitive indication of visibility. Potential visibility needs to be confirmed through field investigation and other visualization techniques.

Elevation data derived from LIDAR data and/or the National Elevation Dataset.



**Northland Solar Project**  
 Appendix A  
**MAP 3: VEGETATED VIEWSHED MAP**  
 [ 2-Mile Study Area ]  
 May 2026

- LEGEND**
- Viewpoint Location
  - Landmarks
  - ✳ Recreation Sites
  - Inventory Route
  - Utility Lines
  - 20' Contours
  - - Vermont Trails
  - 1-Mile Radius
  - 2-Mile Study Area
  - Town Boundary
  - Hydrology
  - Vermont Protected Lands
  - ▨ Proposed Solar Array Layout
- Potential Visibility within Non-Forested Areas
- ▬ Low ▬ High



GIS viewshed mapping is a preliminary means of visual analysis. While beneficial for preliminary orientation and investigation, because of data assumptions and omissions, viewshed maps are not a definitive indication of visibility. Potential visibility needs to be confirmed through field investigation and other visualization techniques.

Elevation and obstruction data derived from LIDAR data, aerial imagery, the National Elevation Dataset and the National Land Cover Database.