

Lowell Cemetery Association Testimony Exhibits



View sightline from the cemetery of the proposed array is separated by a single property, an agricultural field.



Viewpoint 1: Solar array will occupy virtually all the open space beyond the sparse tree line. See the following aerial photos for viewpoint locations.



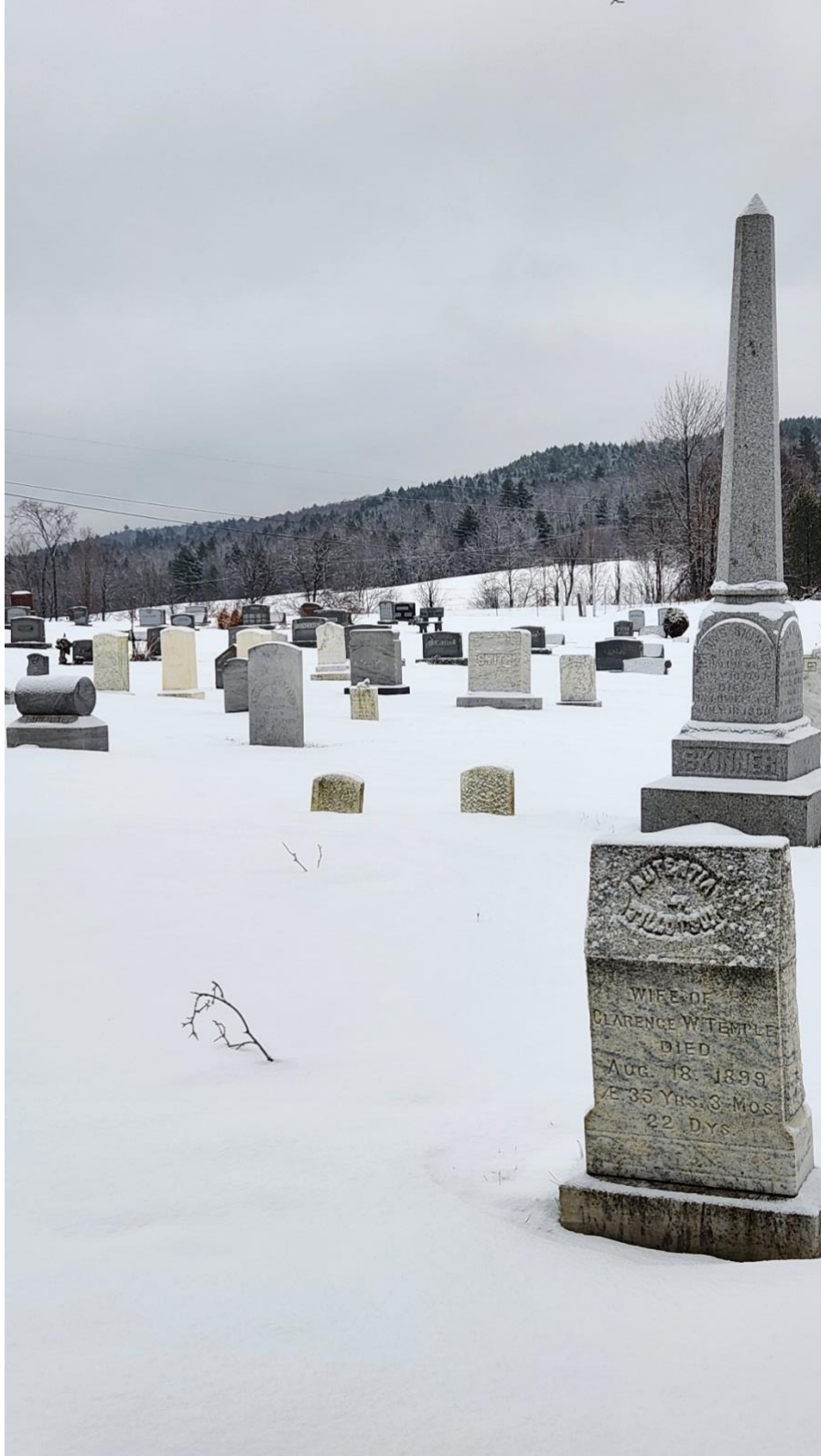
Viewpoint 2: See the following aerial photos for viewpoint locations.



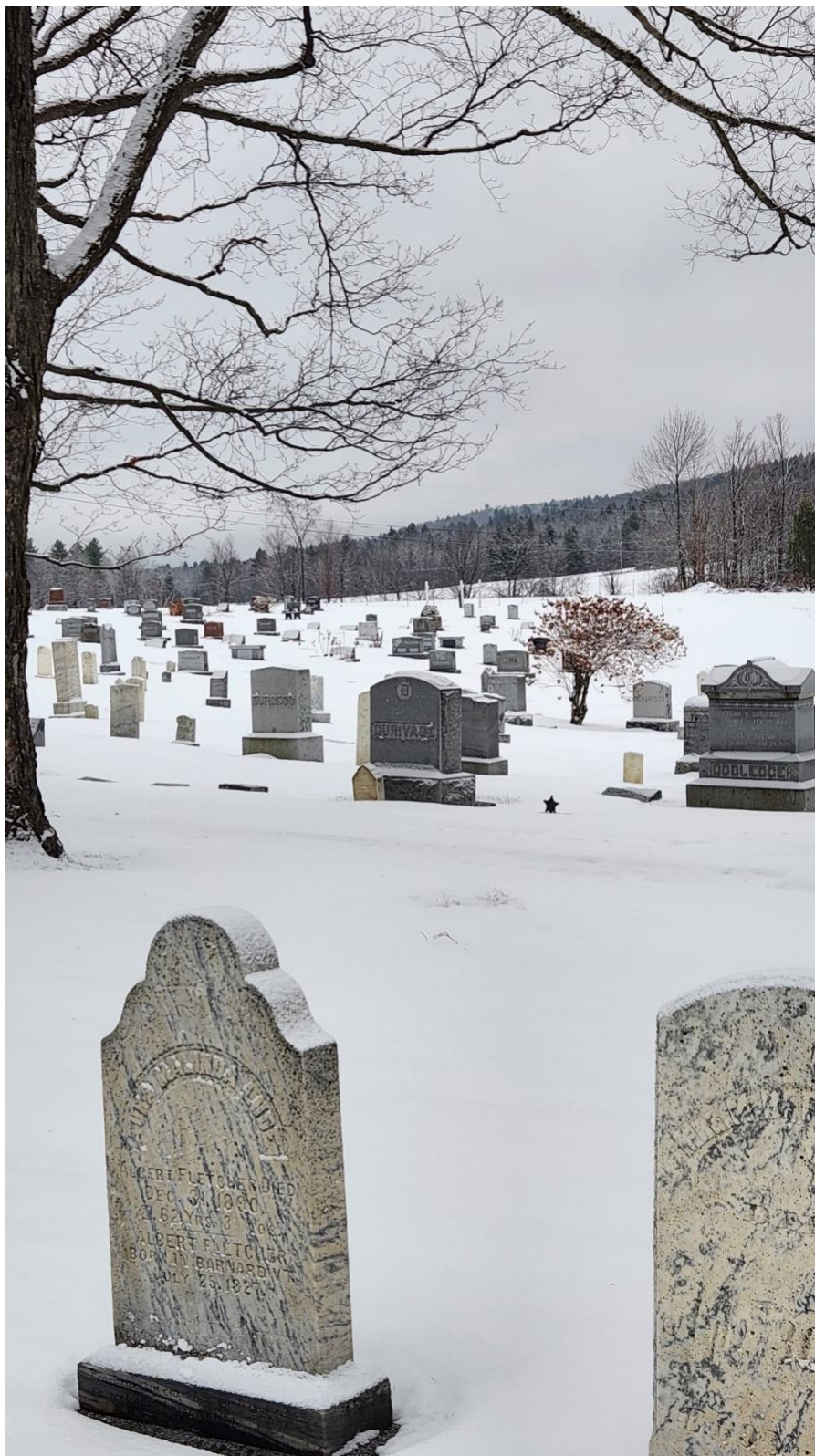
Viewpoint 3: See the following aerial photos for viewpoint locations.



Viewpoint 4: See the following aerial photos for viewpoint locations.



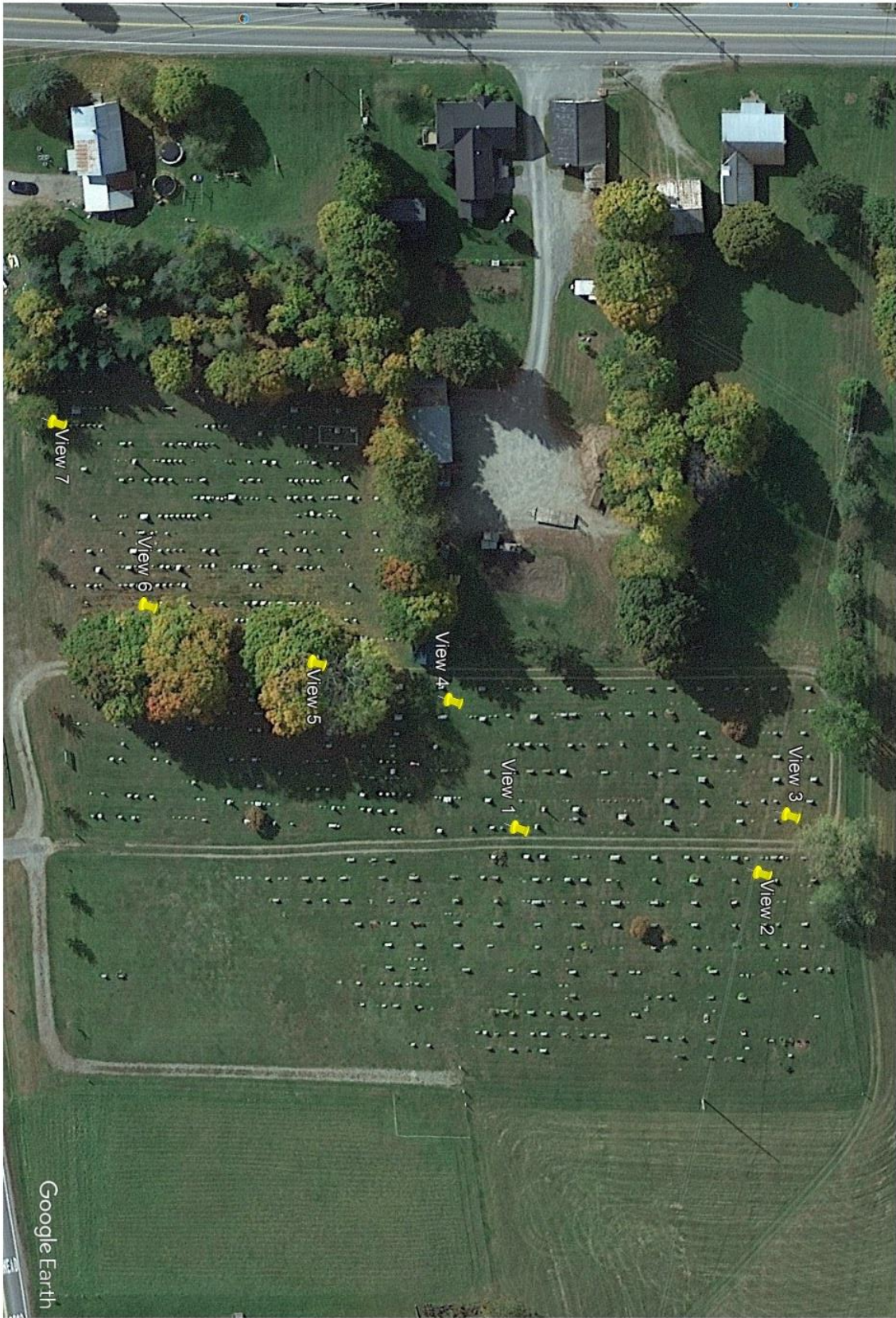
Viewpoint 5: See the following aerial photos for viewpoint locations.



Viewpoint 6: See the following aerial photos for viewpoint locations.



Viewpoint 7: This view of the proposed array location is at the western boundary of the cemetery. It is the farthest point from the array. See the following aerial photos for viewpoint locations.



Locations where photos were taken.



Proposed array is to be located in field beyond hedgerow trees.



My parent's plot with the site of the proposed solar installation in the background.



Mountain View Cemetery