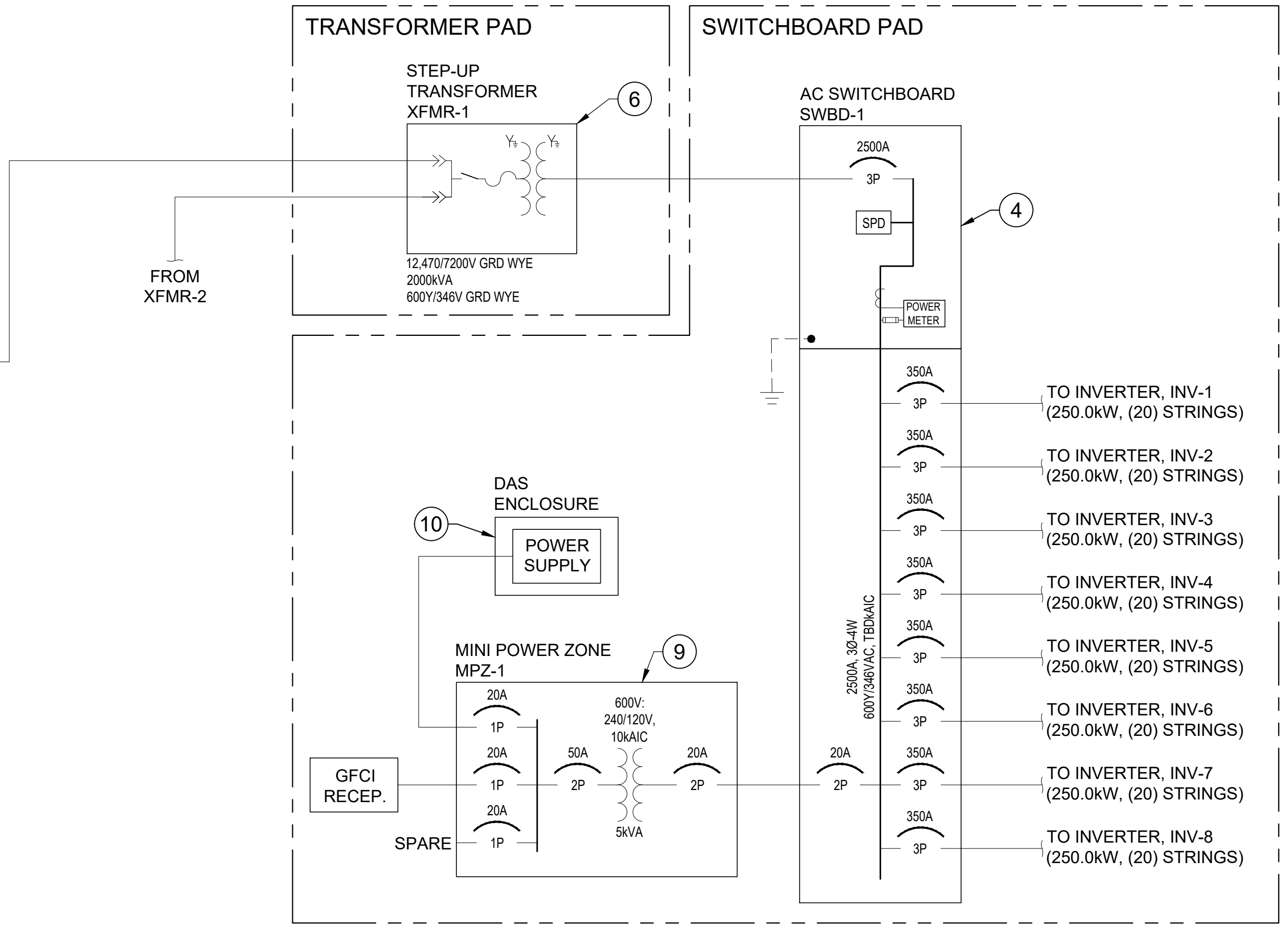
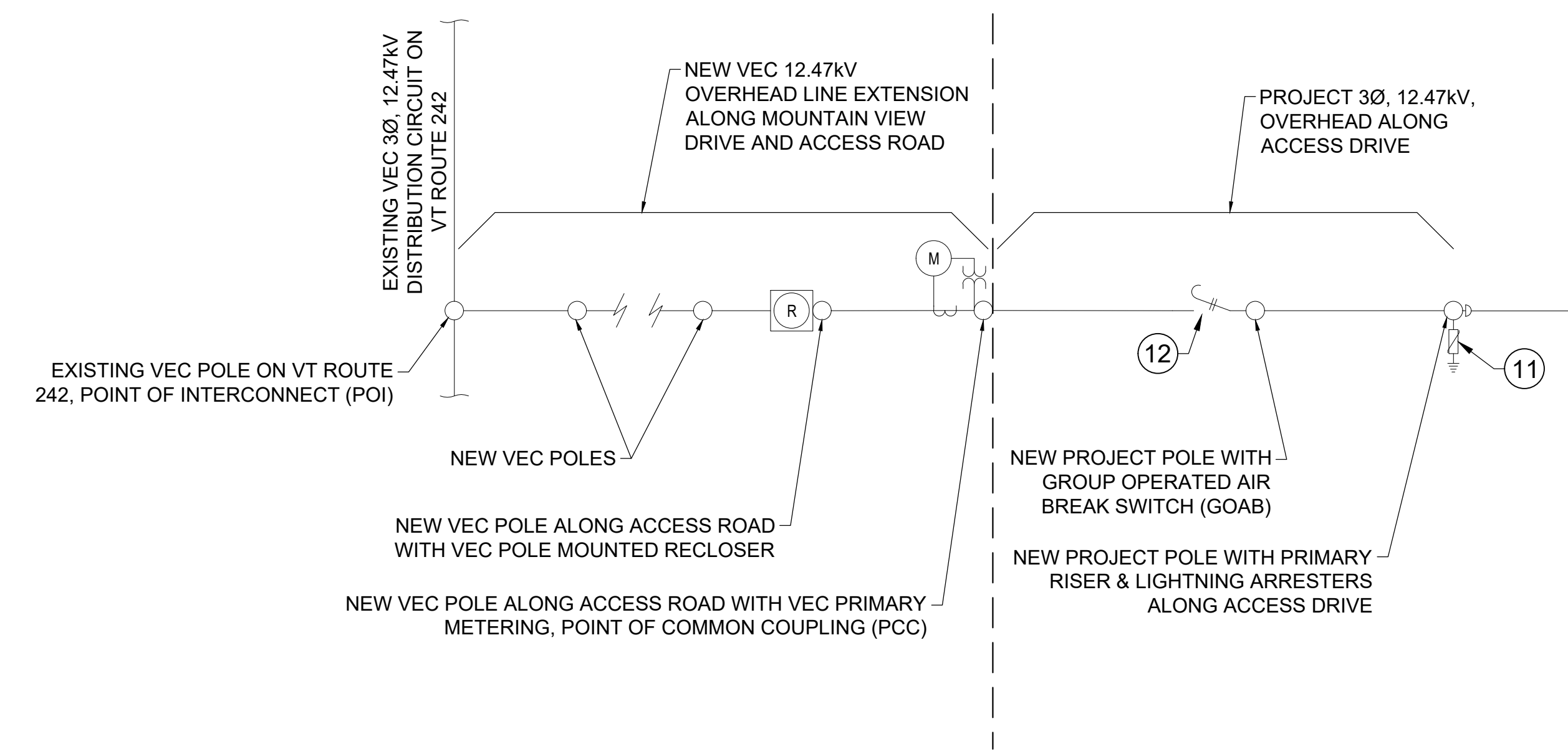


NOT FOR CONSTRUCTION

ALL WORK ON THIS SIDE IS THE RESPONSIBILITY OF VERMONT ELECTRIC COOP (VEC) UNLESS OTHERWISE NOTED. EXACT CONFIGURATION OF EQUIPMENT TO BE DETERMINED BY VEC.

ALL WORK ON THIS SIDE IS THE RESPONSIBILITY OF PV SYSTEM OWNER.

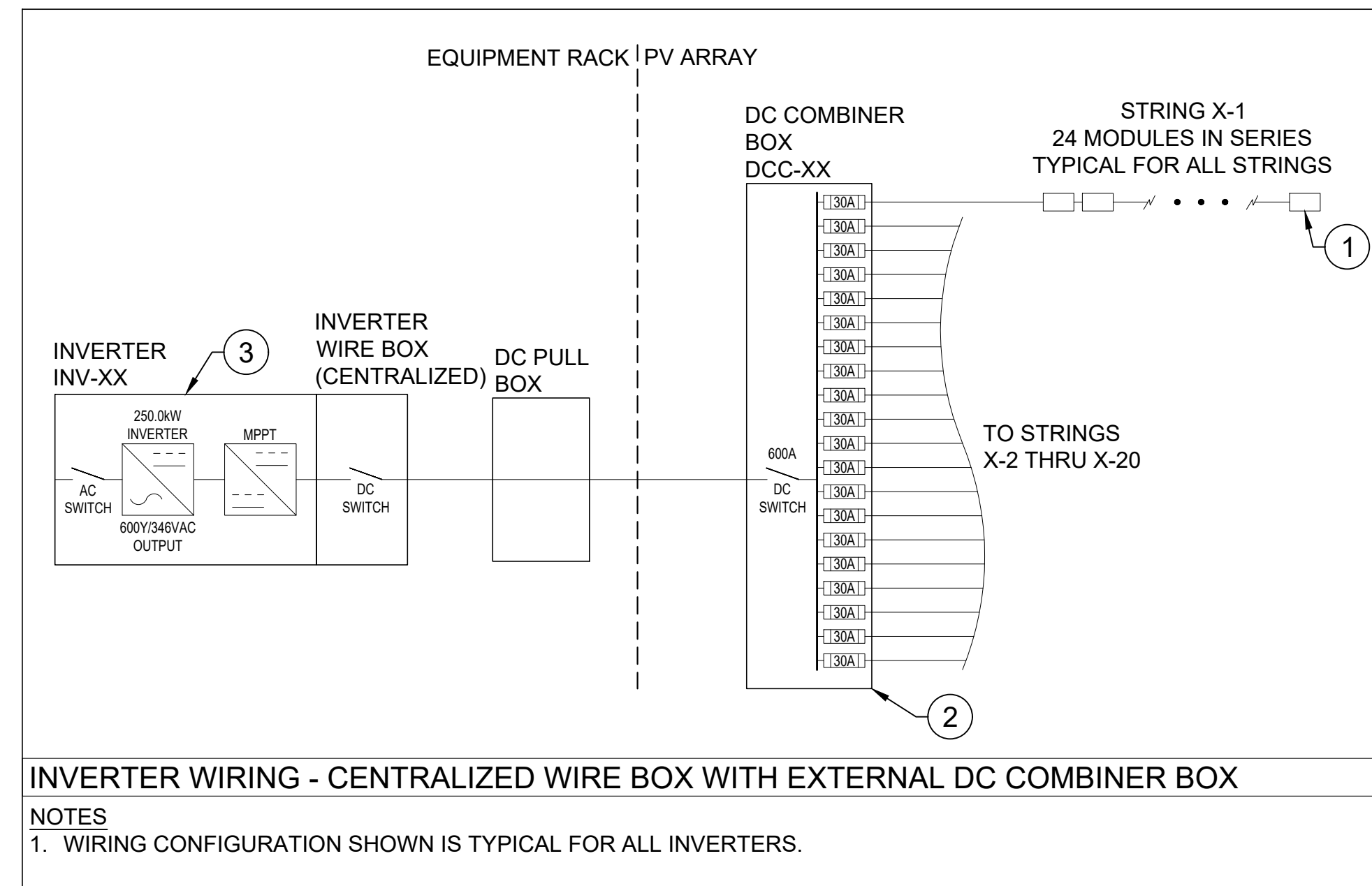
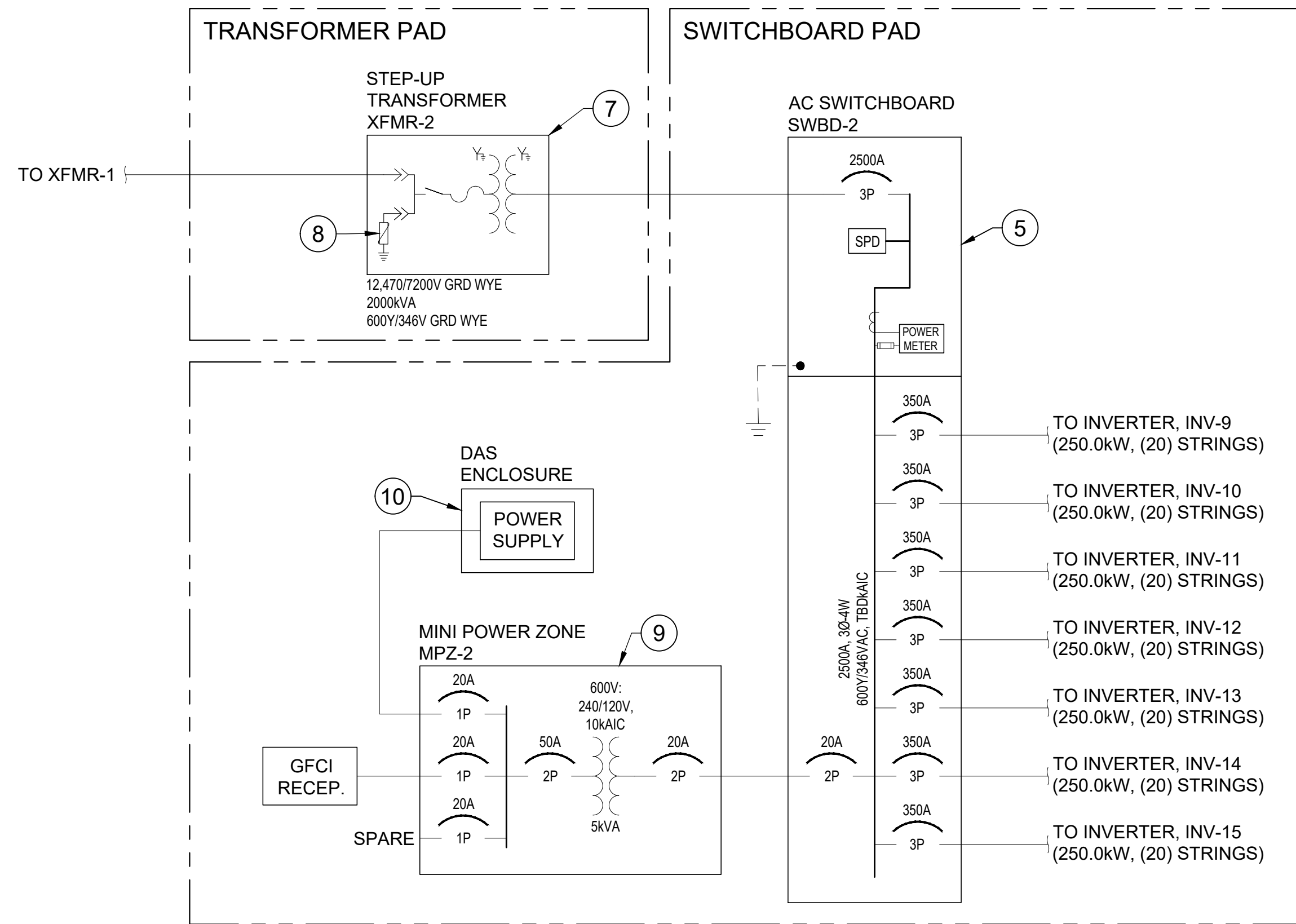


PV SYSTEM RATING		
MODULE MANUFACTURER	HT-SAAE	
MODULE PART #	HT72-18X(ND)-F	
MODULE WATTAGE	590	WATTS
TOTAL # MODULES	7200	MODULES
TOTAL STC POWER RATING kW (DC)	4248.00	kWDC
TOTAL SYSTEM RATING kW (AC)	3750.00	kWAC
PV SERIES STRING RATINGS		
# OF SERIES IN STRING	24	MODULES
MAX Voc @ -28°C	1392.10	VOLTS
MAX STRING CURRENT (Isc)	16.01	AMPS
STC POWER RATING (PER STRING)	14,160	WATTS

BILL OF MATERIALS (APPLIES TO PV-300 & PV-301)		
ITEM	QTY	DESCRIPTION
1	7200	PV MODULE, 590 WATT, MONOCRYSTALLINE, BIFACIAL, (144) HALF-CELLS, HT-SAAE JUPITER MODEL: HT72-18X(ND)-F MODULE SPECS: Vmp = 43.50; Imp = 13.59; Voc = 51.70; Isc = 14.55
2	15	DC COMBINER BOX, 1500VDC, 600A, (20) DC INPUTS, 30A FUSES ON POSITIVE INPUTS, LOAD BREAK DISCONNECT NEMA 3R ENCLOSURE, TERRASmart OR EQUAL
3	15	PV INVERTER, 250.0 kW, 860-1450 VDC INPUT, 900-1300 VDC MPPT, CENTRALIZED WIRE-BOX, 600Y/342V 3-PHASE GROUNDED WYE OUTPUT, CHINT POWER SYSTEMS MODEL CPS SCH250K-T-US-600
4	1	AC SWITCHBOARD, 600Y/346V, 3Ø-4W, 2500A RATED BUS, INTEGRATED REVENUE GRADE METER, CABINET HEATERS, 2500A-3P MAIN BREAKER, (8) 350A-3P & (1) 20A-2P BRANCH BREAKERS, ARC ENERGY REDUCTION MAINTENANCE SWITCH, 200KA INTEGRATED SPD SURGE PROTECTION, NEMA 3R ENCLOSURE
5	1	AC SWITCHBOARD, 600Y/346V, 3Ø-4W, 2500A RATED BUS, INTEGRATED REVENUE GRADE METER, CABINET HEATERS, 2500A-3P MAIN BREAKER, (7) 350A-3P & (1) 20A-2P BRANCH BREAKERS, ARC ENERGY REDUCTION MAINTENANCE SWITCH, 200KA INTEGRATED SPD SURGE PROTECTION, NEMA 3R ENCLOSURE
6	1	TRANSFORMER, 2000KVA, 12.47Ø/7200V GRD WYE PRIMARY, 600Y/346V GRD WYE SECONDARY, LOOP-FEED, 600A RATED BUSHING WELLS, PRIMARY NEUTRAL BUSHING TO BE FULLY INSULATED, IMPEDANCE: 5.75% +/-7.5%, X/R: TBD
7	1	TRANSFORMER, 2000KVA, 12.47Ø/7200V GRD WYE PRIMARY, 600Y/346V GRD WYE SECONDARY, LOOP-FEED, 200A RATED BUSHING WELLS, PRIMARY NEUTRAL BUSHING TO BE FULLY INSULATED, IMPEDANCE: 5.75% +/-7.5%, X/R: TBD
8	3	LIGHTNING ARRESTERS, 15kV RATED, 10kV/8.4kV MCOV RATED, ELBOW MOUNTED
9	2	MINI-POWER ZONE, 600V PRIMARY, 120/240V 1Ø-3W SECONDARY, 5 KVA, 12-CIRCUIT, NEMA 3R ENCLOSURE
10	2	DATA ACQUISITION SYSTEM (DAS), TO INCLUDE: INVERTER DIRECT MONITORING; SWITCHBOARD POWER METER MONITORING; WEATHER STATION
11	3	LIGHTNING ARRESTERS, 15kV CLASS, 10kV/8.4kV MCOV, MOUNTED ON BRACKET WITH 12.47kV UNDERGROUND CABLE TERMINATIONS
12	1	GANG OPERATED AIR BREAK SWITCH (GOAB), 15kV, 600A, VISIBLE OPEN, LOCKABLE IN THE OPEN POSITION

GENERAL NOTE: EXACT MANUFACTURER, MODEL NUMBER AND SIZE OF THE MODULES AND INVERTERS ARE SUBJECT TO CHANGE DEPENDING ON MARKET AVAILABILITY. THE EXACT EQUIPMENT WILL NOT BE MATERIALLY DIFFERENT FROM WHAT IS SPECIFIED HERE AND TOTAL NAMEPLATE AC CAPACITY OF INVERTERS WILL NOT EXCEED 3750.0kW WITHOUT UTILITY REVIEW AND APPROVAL.

Z:\Shared\SPF Projects\Novus Energy\Novus 242 Solar, LLC 3.7MW - Jay\Design\PV Drawings\Interconnect & Permitting\PV-30X_One-Line_Novus_Jay_Solar_3.75MW_Int_110525.dwg, 11/05/2025 4:05:03 PM, DWG To PDF, p=3



INVERTERS - INPUT & OUTPUT RATINGS		
INVERTER DESIGNATION	ALL INVERTERS	
INVERTER POWER	250	kWAC
MODULE WATTAGE	590	WDC
QTY OF MODULES PER STRING	24	MODULES
QTY OF PARALLEL STRINGS	20	STRINGS
DC OPERATING INPUT VOLTAGE	1044.0	DC VOLTS
DC OPERATING INPUT CURRENT	299.0	DC AMPS
MAXIMUM SYSTEM VOLTAGE @ -28C	1392.1	DC VOLTS
MAXIMUM CIRCUIT CURRENT	400.1	DC AMPS
INVERTER OUTPUT VOLTAGE	600	AC VOLTS
INVERTER MAX OUTPUT CURRENT	241	AC AMPS

RATINGS NOTES:
1. MAXIMUM CIRCUIT CURRENT INCLUDES 10.0% BIFACIAL GAIN.

NOT FOR CONSTRUCTION

SOLAR POWER ENGINEERING
PO BOX 22
CALAIS, VERMONT 05648
802.595.3914

NOVUS ENERGY
DEVELOPMENT LLC
ENERGY WITH A BRIGHT FUTURE
2 SPRING STREET
MONTPELIER, VERMONT 05602
info@novusenergydev.com



NOVUS 242 SOLAR, LLC
3750.0 kWAC PV PROJECT
75 MOUNTAIN VIEW DRIVE
JAY, VT 05859

DATE: 11/05/2025
PROJECT #: NED_242_0217
SCALE:
DRAWN BY: TPM

REVISIONS
ISSUED FOR INTERCONNECT 11/05/2025

ONE-LINE DIAGRAM
INVERTER WIRING

PV-301