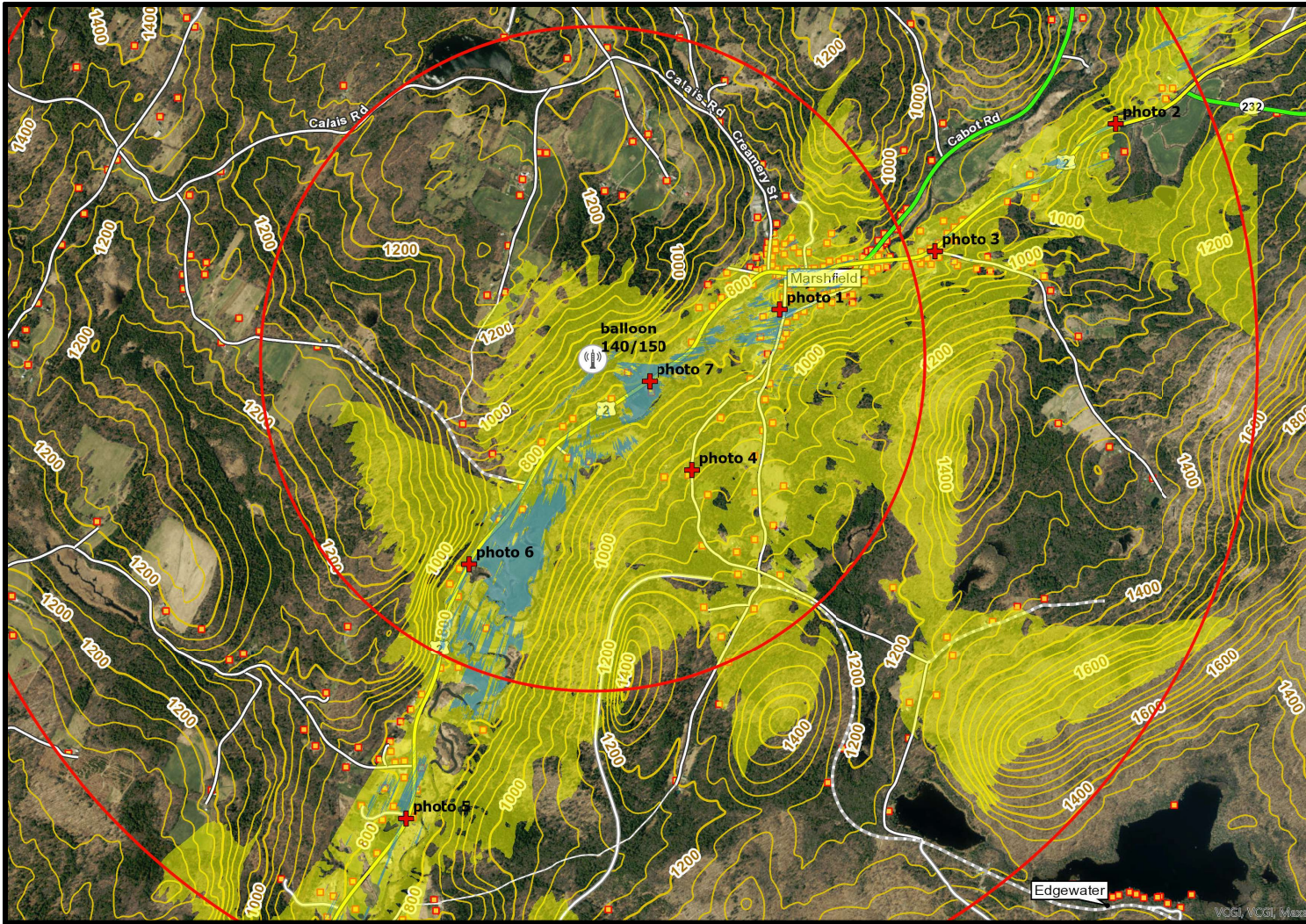


VB - Marshfield, VT - Visibility Map

Photos and simulations are for demonstration purposes only. Visibility is based on a variety of factors including weather, season, lighting, and location.



VB - Marshfield, VT - Photo Location Map

Photos and simulations are for demonstration purposes only. Visibility is based on a variety of factors including weather, season, lighting, and location.





View #:
01

Date:
12/31/24

Time:
10:04 am

35mm Equivalent Focal Length:
47mm

Approximate Location:
122 School St

GPS Coordinates:
44° 20' 58.91" N
72° 21' 14.78" W

Distance to site:
3,073'

Orientation:
West (255°)

VB - Marshfield, VT - Existing Conditions

Photos and simulations are for demonstration purposes only. Visibility is based on a variety of factors including weather, season, lighting, and location.





View #:
01

Date:
12/31/24

Time:
10:04 am

35mm Equivalent Focal Length:
47mm

Approximate Location:
122 School St

GPS Coordinates:
44° 20' 58.91" N
72° 21' 14.78" W

Distance to site:
3,073'

Orientation:
West (255°)

VB - Marshfield, VT - Tower Simulation

Photos and simulations are for demonstration purposes only. Visibility is based on a variety of factors including weather, season, lighting, and location.





View #:
02

Date:
12/31/24

Time:
10:25 am

35mm Equivalent Focal Length:
44mm

Approximate Location:
487 US Route 2

GPS Coordinates:
44° 21' 27.82" N
72° 20' 01.26" W

Distance to site:
9,120' (1.73mi)

Orientation:
West (246°)

VB - Marshfield, VT - Existing Conditions

Photos and simulations are for demonstration purposes only. Visibility is based on a variety of factors including weather, season, lighting, and location.





View #:
02

Date:
12/31/24

Time:
10:25 am

35mm Equivalent Focal Length:
44mm

Approximate Location:
487 US Route 2

GPS Coordinates:
44° 21' 27.82" N
72° 20' 01.26" W

Distance to site:
9,120' (1.73mi)

Orientation:
West (246°)

VB - Marshfield, VT - Tower Simulation

Photos and simulations are for demonstration purposes only. Visibility is based on a variety of factors including weather, season, lighting, and location.





View #:
03

Date:
12/31/24

Time:
10:29 am

35mm Equivalent Focal Length:
47mm

Approximate Location:
1250 US Route 2

GPS Coordinates:
44° 21' 08.08" N
72° 20' 41.10" W

Distance to site:
5,712' (1.08mi)

Orientation:
West (253°)

VB - Marshfield, VT - Existing Conditions

Photos and simulations are for demonstration purposes only. Visibility is based on a variety of factors including weather, season, lighting, and location.





View #:
03

Date:
12/31/24

Time:
10:29 am

35mm Equivalent Focal Length:
47mm

Approximate Location:
1250 US Route 2

GPS Coordinates:
44° 21' 08.08" N
72° 20' 41.10" W

Distance to site:
5,712' (1.08mi)

Orientation:
West (253°)

VB - Marshfield, VT - Tower Simulation

Photos and simulations are for demonstration purposes only. Visibility is based on a variety of factors including weather, season, lighting, and location.





View #:
04

Date:
12/31/24

Time:
10:42 am

35mm Equivalent Focal Length:
47mm

Approximate Location:
390 Lower Depot Rd

GPS Coordinates:
44° 20' 33.59" N
72° 21' 33.95" W

Distance to site:
2,375' (0.45mi)

Orientation:
Northwest (318°)

VB - Marshfield, VT - Existing Conditions

Photos and simulations are for demonstration purposes only. Visibility is based on a variety of factors including weather, season, lighting, and location.





View #:
04

Date:
12/31/24

Time:
10:42 am

35mm Equivalent Focal Length:
47mm

Approximate Location:
390 Lower Depot Rd

GPS Coordinates:
44° 20' 33.59" N
72° 21' 33.95" W

Distance to site:
2,375' (0.45mi)

Orientation:
Northwest (318°)

VB - Marshfield, VT - Tower Simulation

Photos and simulations are for demonstration purposes only. Visibility is based on a variety of factors including weather, season, lighting, and location.





View #:
05

Date:
12/31/24

Time:
11:08 am

35mm Equivalent Focal Length:
47mm

Approximate Location:
3821 US Route 2

GPS Coordinates:
44° 19' 38.87" N
72° 22' 36.70" W

Distance to site:
7,865' (1.49mi)

Orientation:
North (22°)

VB - Marshfield, VT - Existing Conditions

Photos and simulations are for demonstration purposes only. Visibility is based on a variety of factors including weather, season, lighting, and location.





View #:
05

Date:
12/31/24

Time:
11:08 am

35mm Equivalent Focal Length:
47mm

Approximate Location:
3821 US Route 2

GPS Coordinates:
44° 19' 38.87" N
72° 22' 36.70" W

Distance to site:
7,865' (1.49mi)

Orientation:
North (22°)

VB - Marshfield, VT - Tower Simulation

Photos and simulations are for demonstration purposes only. Visibility is based on a variety of factors including weather, season, lighting, and location.





View #:
06

Date:
12/31/24

Time:
11:14 am

35mm Equivalent Focal Length:
44mm

Approximate Location:
3052 US Route 2

GPS Coordinates:
44° 20' 18.81" N
72° 22' 22.86" W

Distance to site:
3,830' (0.72mi)

Orientation:
North (31°)

VB - Marshfield, VT - Existing Conditions

Photos and simulations are for demonstration purposes only. Visibility is based on a variety of factors including weather, season, lighting, and location.





View #:
06

Date:
12/31/24

Time:
11:14 am

35mm Equivalent Focal Length:
44mm

Approximate Location:
3052 US Route 2

GPS Coordinates:
44° 20' 18.81" N
72° 22' 22.86" W

Distance to site:
3,830' (0.72mi)

Orientation:
North (31°)

VB - Marshfield, VT - Tower Simulation

Photos and simulations are for demonstration purposes only. Visibility is based on a variety of factors including weather, season, lighting, and location.





View #:
07

Date:
12/31/24

Time:
11:19 am

35mm Equivalent Focal Length:
44mm

Approximate Location:
2263 US Route 2

GPS Coordinates:
44° 20' 47.45" N
72° 21' 42.73" W

Distance to site:
990' (0.18mi)

Orientation:
Northwest (293°)

VB - Marshfield, VT - Existing Conditions

Photos and simulations are for demonstration purposes only. Visibility is based on a variety of factors including weather, season, lighting, and location.





View #:
07

Date:
12/31/24

Time:
11:19 am

35mm Equivalent Focal Length:
44mm

Approximate Location:
2263 US Route 2

GPS Coordinates:
44° 20' 47.45" N
72° 21' 42.73" W

Distance to site:
990' (0.18mi)

Orientation:
Northwest (293°)

VB - Marshfield, VT - Tower Simulation

Photos and simulations are for demonstration purposes only. Visibility is based on a variety of factors including weather, season, lighting, and location.

