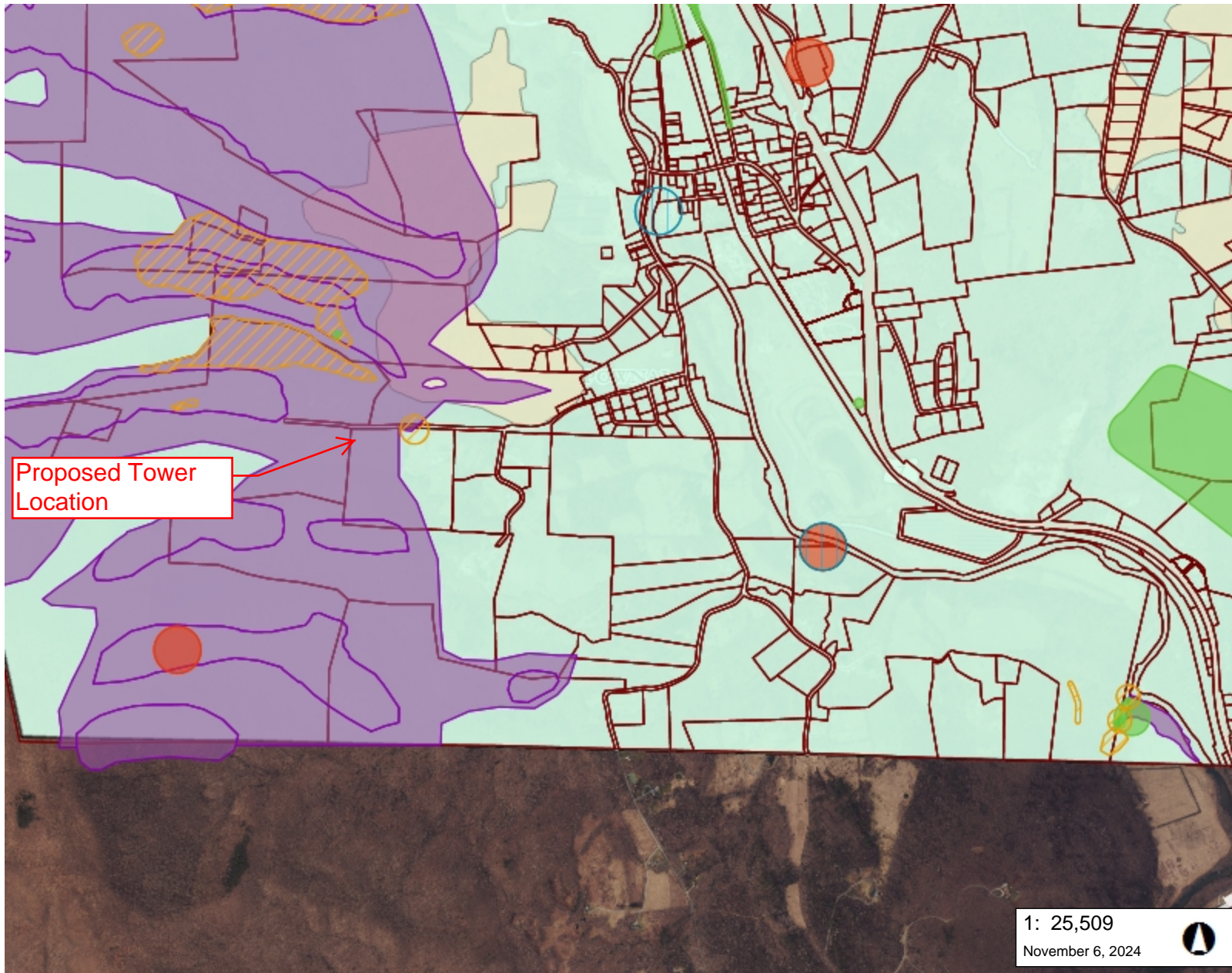




Natural Resources Atlas

Vermont Agency of Natural Resources

vermont.gov




Proposed Tower Location

LEGEND

- Uncommon Species and other
 - Plant (orange hatched)
 - Animal (blue hatched)
 - Natural Community (purple hatched)
- Rare Threatened and Endange
 - RTE Animal (orange circle)
 - RTE Plant (green circle)
- Significant Natural Communities
 - Amphibian and Reptile Crossir
 - Confirmed (blue circle)
 - Potential (green circle)
 - Deer Wintering Areas (tan)
 - Indiana Bat Hibernacula
 - Observed (light blue)
 - Potential (purple)
 - Northern Long-Eared Bat (light blue)
 - Tricolored Bat (yellow)
- Parcels (standardized) (white outline)
- Roads
 - Interstate (thick blue line)
 - US Highway; 1 (thick red line)
 - State Highway (green line)
 - Town Highway (Class 1) (grey line)
 - Town Highway (Class 2,3) (grey line)
 - Town Highway (Class 4) (grey line)
 - State Forest Trail (dotted grey line)
 - National Forest Trail (dotted grey line)

1: 25,509
November 6, 2024



1,296.0 0 648.00 1,296.0 Meters
 WGS_1984_Web_Mercator_Auxiliary_Sphere 1" = 2126 Ft. 1cm = 255 Meters
 © Vermont Agency of Natural Resources THIS MAP IS NOT TO BE USED FOR NAVIGATION

DISCLAIMER: This map is for general reference only. Data layers that appear on this map may or may not be accurate, current, or otherwise reliable. ANR and the State of Vermont make no representations of any kind, including but not limited to, the warranties of merchantability, or fitness for a particular use, nor are any such warranties to be implied with respect to the data on this map.

NOTES

Map created using ANR's Natural Resources Atlas