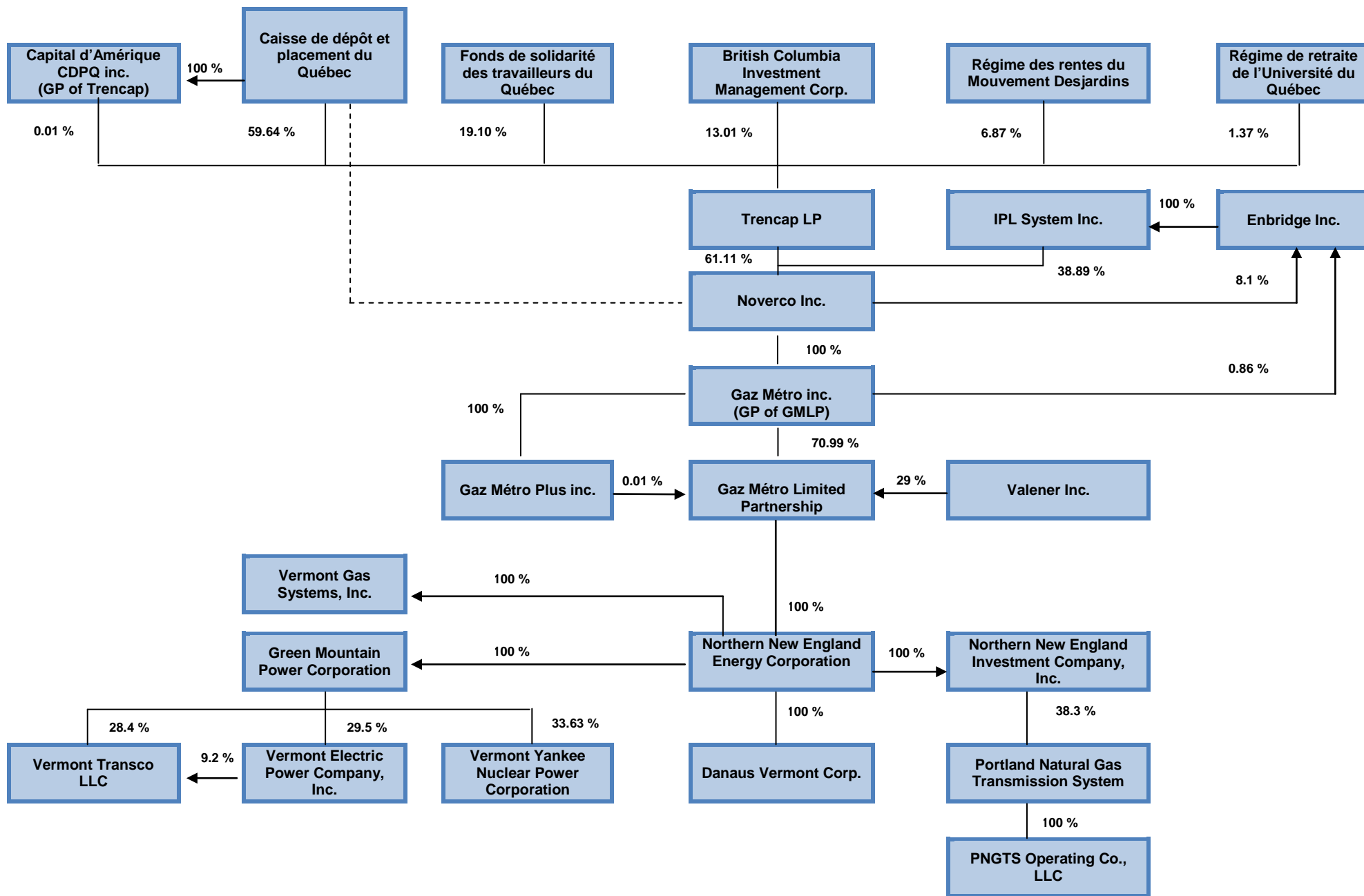
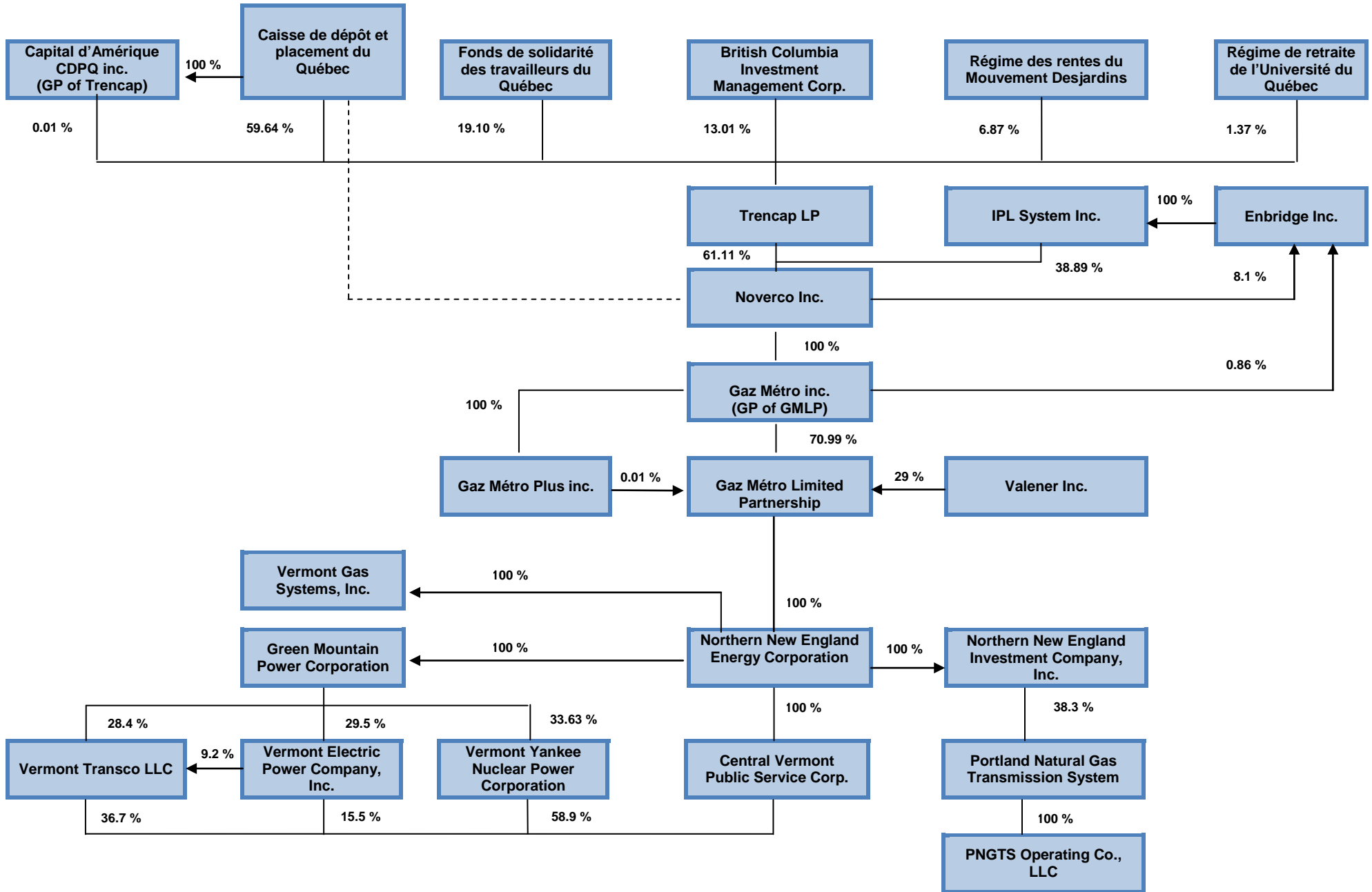


Gaz Métro Organization Chart: PRE-ACQUISITION OF CENTRAL VERMONT PUBLIC SERVICE CORPORATION

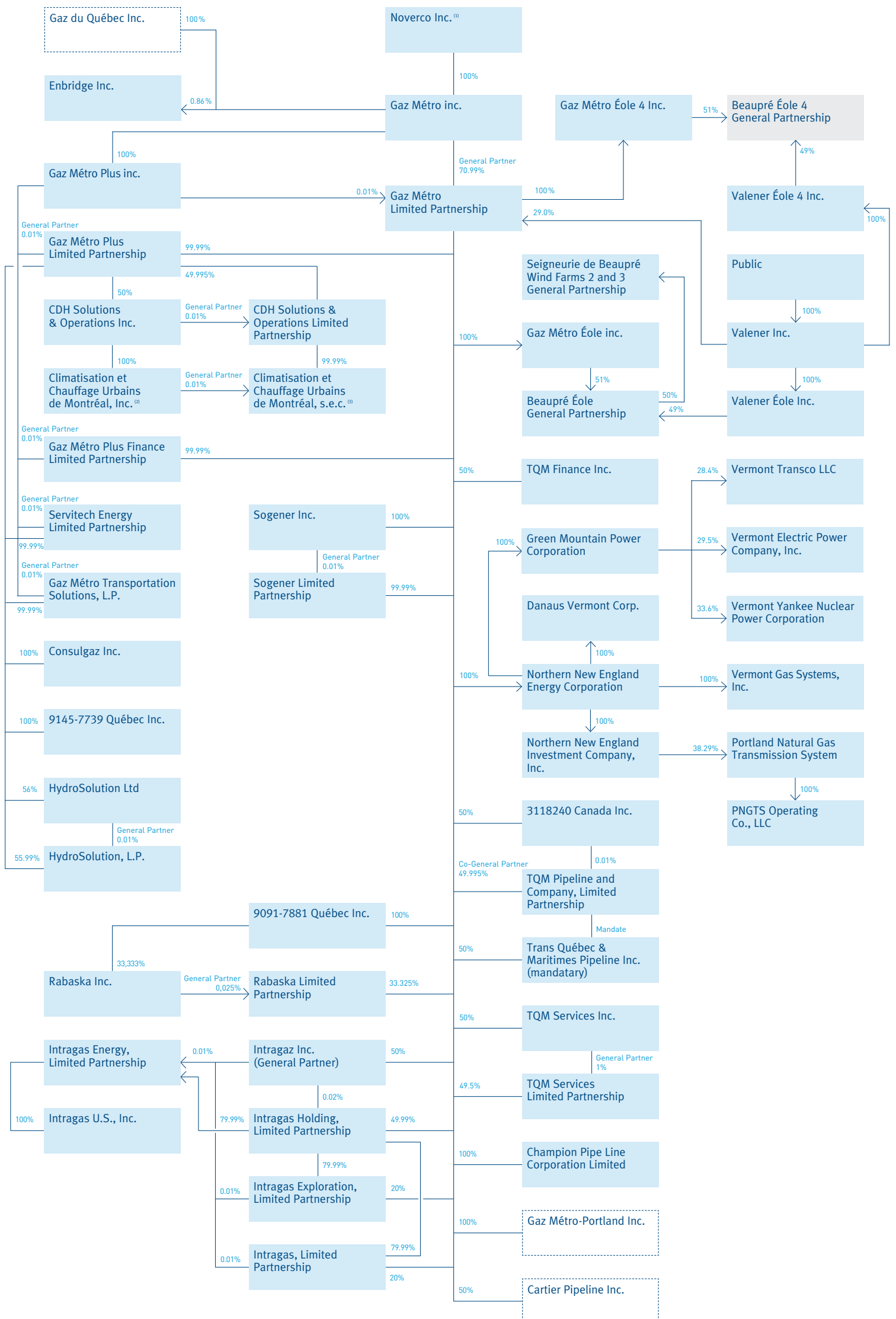


Gaz Métro Organization Chart

POST-ACQUISITION OF CENTRAL VERMONT PUBLIC SERVICE CORPORATION



Corporate group as at September 1, 2011



The percentage interests shown in the organization chart include direct and indirect interests.

(1) The shareholders are: Trencap, s.e.c.: 61.11%, Enbridge: 38.89%

(2) "CCUM" is also another name that can be used

(3) "CCUM, s.e.c." is also another name that can be used

Inactive company

Being created