



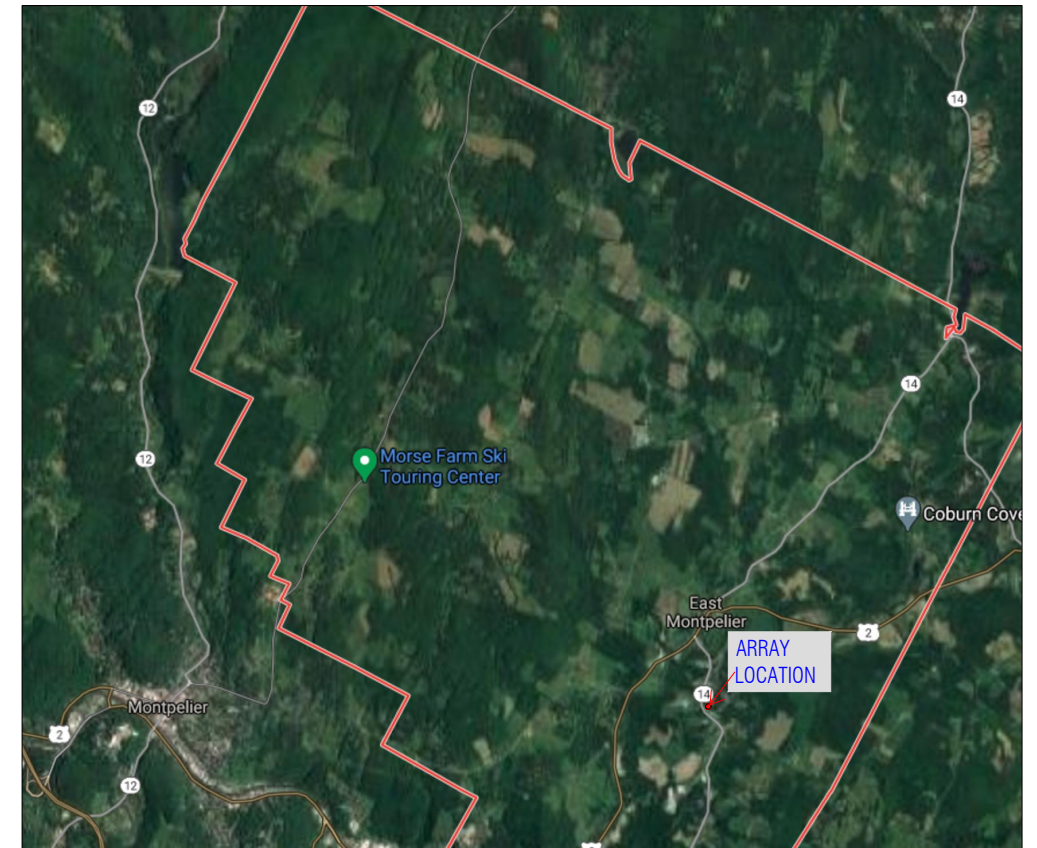
(132) LONGI 440W MODULES
 58.08 kWp/44.2 kW
 (3) SE 11400H & (1) SE 10000H

APA READY RACK GROUND MOUNT
 35° TILT
 AZIMUTH 197°
 DC CONDUIT RUN (BURIED) APPROX. 25' BETWEEN ARRAYS.

AC EQUIPMENT BOARD MOUNTED ON NORTH EAST
 BACKSIDE OF ARRAY WITH (4) SOLAR EDGE INVERTERS, (1) AC
 COMBINER PANEL, (1) AC DISCONNECT SWITCH
 AC CONDUIT RUN (BURIED) APPROX. 375' TO EXISTING SERVICE EQUIPMENT

EXISTING SERVICE EQUIPMENT
 ON WEST SIDE OF BUILDING
 GMP ACCOUNT: 19455100008
 SINGLE PHASE, 240V

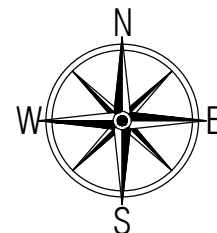
SERVICE MAY BE UPGRADED AT FUTURE DATE
 SCREENING TO BE PLANTED ALONG CARLETON RD
 TOTAL ARRAY AREA: 0.79 ACRES
 TRENCH AREA: 0.1 ACRE



SUNCOMMON
 442 US-2 WATERBURY,
 VT 05676
 (802)-882-8181

RB TECHNOLOGIES
 RUBIN BENNETT
 1970 VT RT 14 S
 EAST MONTPELIER, VT
 WASHINGTON COUNTY
 09-034.010
 3.44 ACRES COMM BLDG

PROJECT LOG			
DB	VR	DATE	NOTES
OKP	1	1/20/21	PRELIM
OKP	2	2/2/21	SETBACK UPDATE
OKP	3	2/5/21	WELL UPDATE
OKP	4	3/4/21	UPDATE
OKP	5	3/11/21	UPDATE



SITE PLAN
 SCALE: 1/64" = 1'-0"

PV.01 1 OF 1