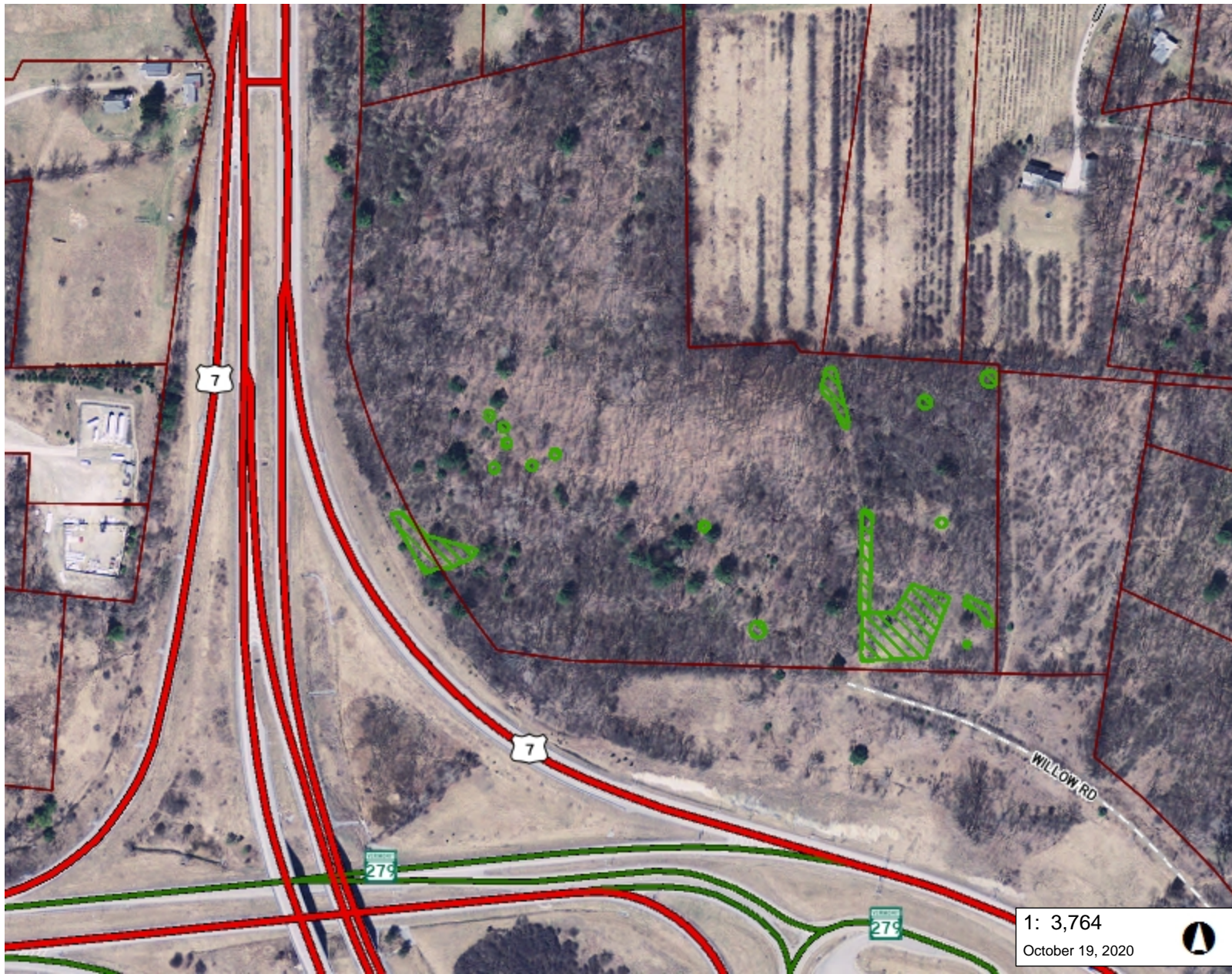


**EXHIBIT AH-JM-6**



### LEGEND

- Rare Threatened Endangered
  - Threatened or Endangered
  - Rare
- Parcels (standardized)
- Roads
  - Interstate
  - US Highway; 1
  - State Highway
  - Town Highway (Class 1)
  - Town Highway (Class 2,3)
  - Town Highway (Class 4)
  - State Forest Trail
  - National Forest Trail
  - Legal Trail
  - Private Road/Driveway
  - Proposed Roads
- Stream/River
  - Stream
  - Intermittent Stream
  - Other
- Town Boundary

1: 3,764

October 19, 2020



191.0 0 96.00 191.0 Meters

WGS\_1984\_Web\_Mercator\_Auxiliary\_Sphere  
© Vermont Agency of Natural Resources

1" = 314 Ft. 1cm = 38 Meters  
THIS MAP IS NOT TO BE USED FOR NAVIGATION

DISCLAIMER: This map is for general reference only. Data layers that appear on this map may or may not be accurate, current, or otherwise reliable. ANR and the State of Vermont make no representations of any kind, including but not limited to, the warranties of merchantability, or fitness for a particular use, nor are any such warranties to be implied with respect to the data on this map.

### NOTES

Map created using ANR's Natural Resources Atlas